



TX Blanco Co. [PFS:3]
N 30.31219° W 98.23949°
Perd. Falls St. Pk.; oak-
juniper woodland/savanna
11 June 2008; UV Trap 8
H. L. Kons Jr. & R. J. Borth

Dissection/Photo Number

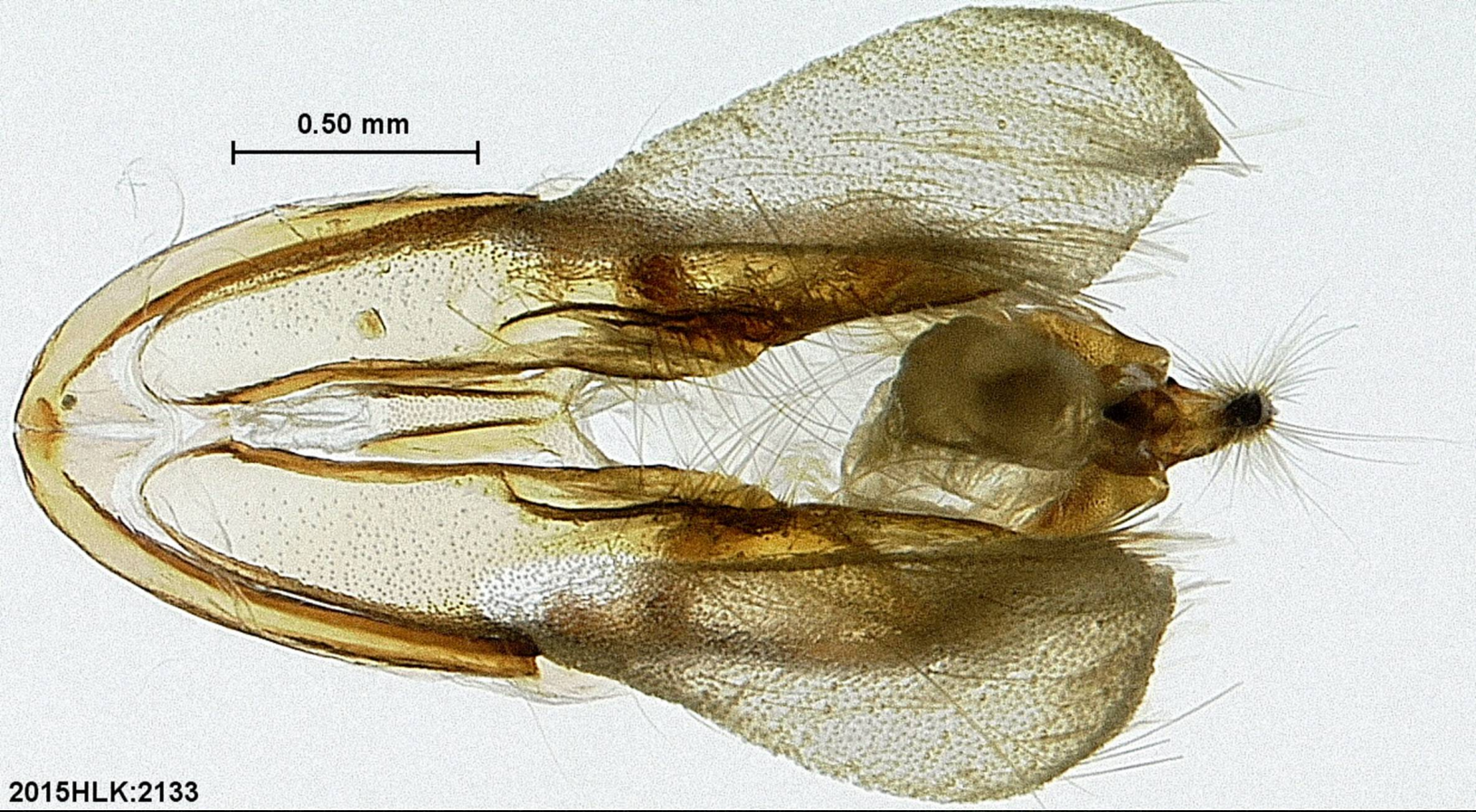
2015HLK:

2133♂

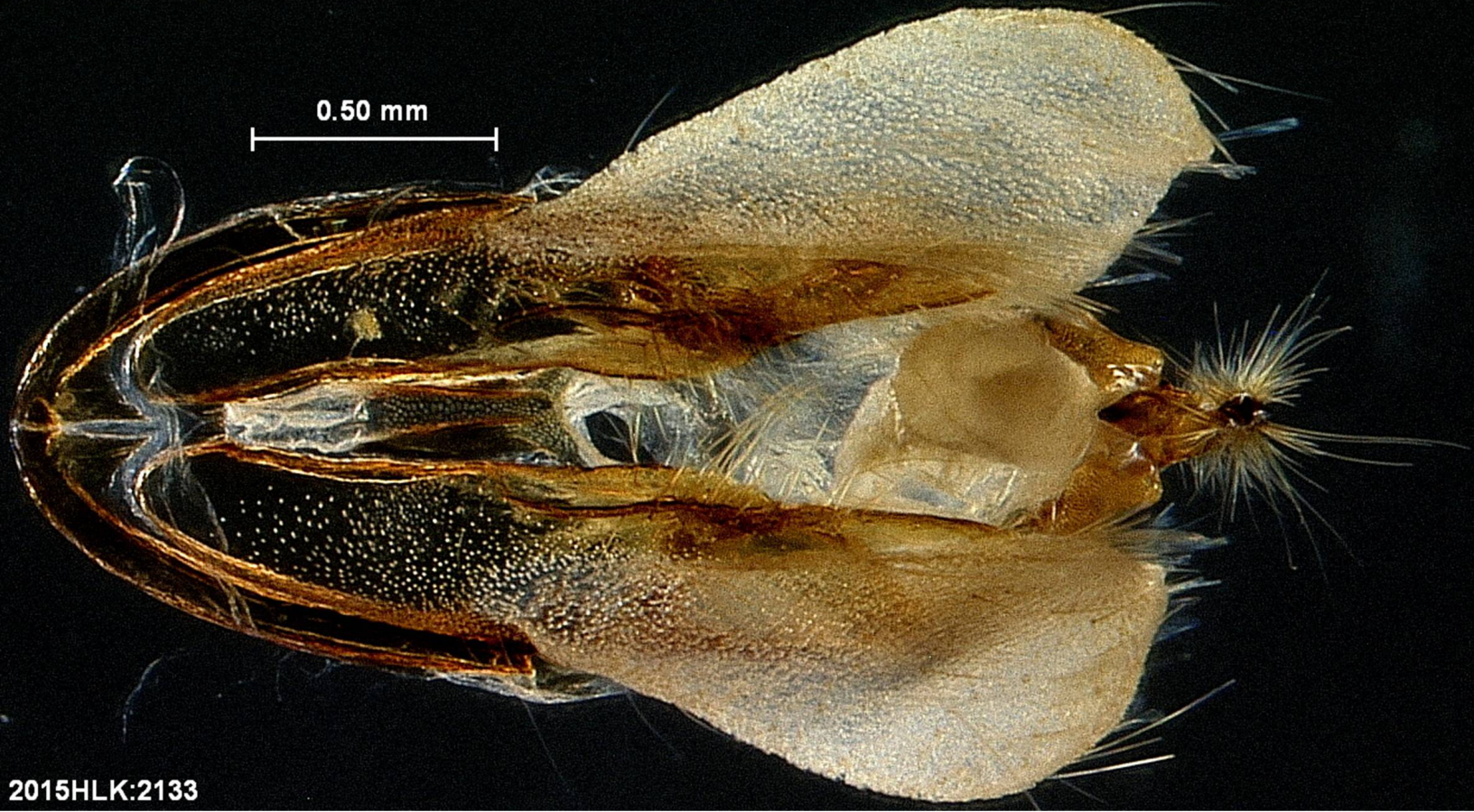
Dissected by

Huao L. Kons Jr.

2015



2015HLK:2133



2015HLK:2133



2015HLK:2133



2015HLK:2133

Capsule lateral





Capsule lateral



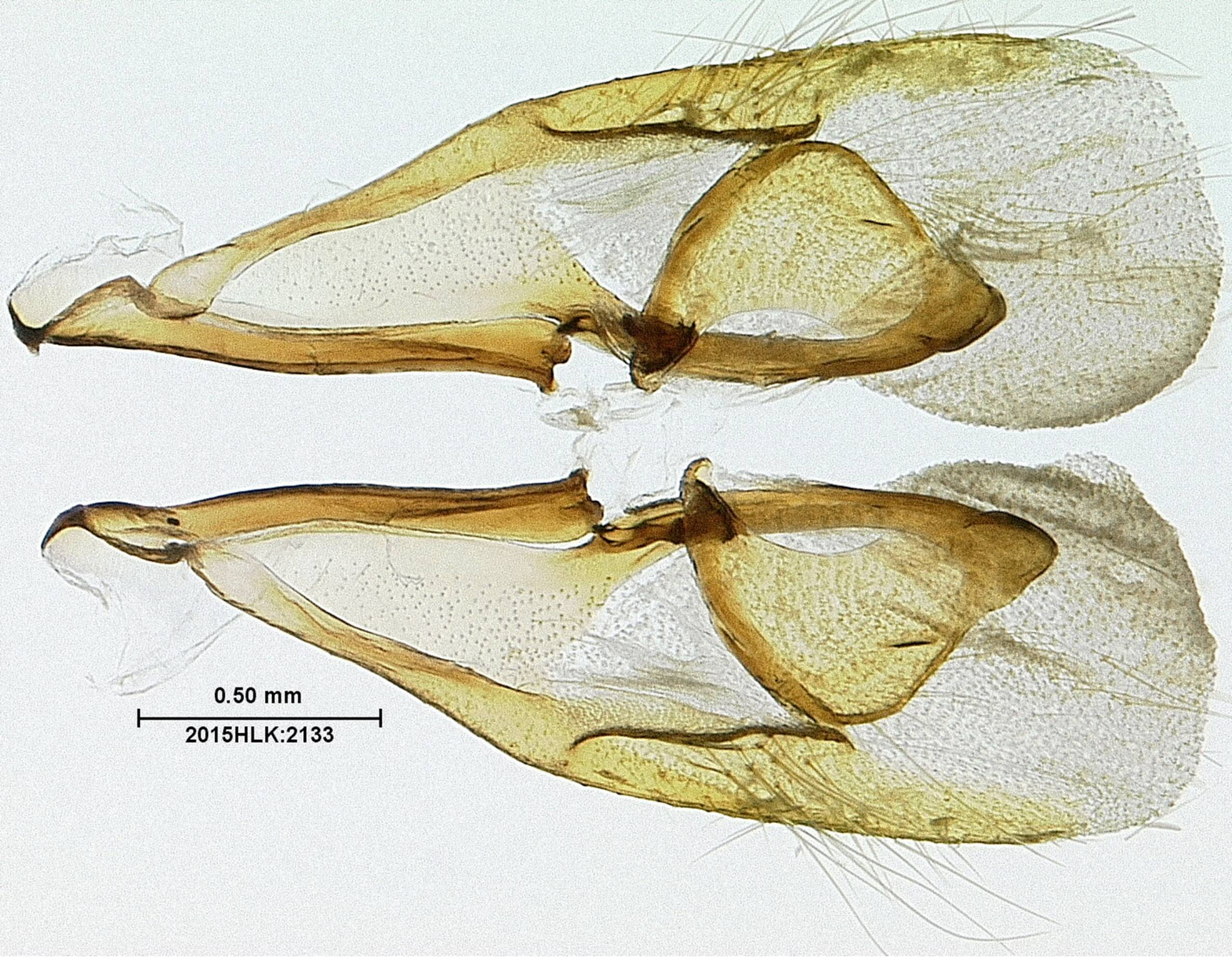
1.0 mm
2015HLK:2133

Capsule ventral (no hairs removed)



1.0 mm
2015HLK:2133

Capsule lateral (no hairs removed)



Valvae inner

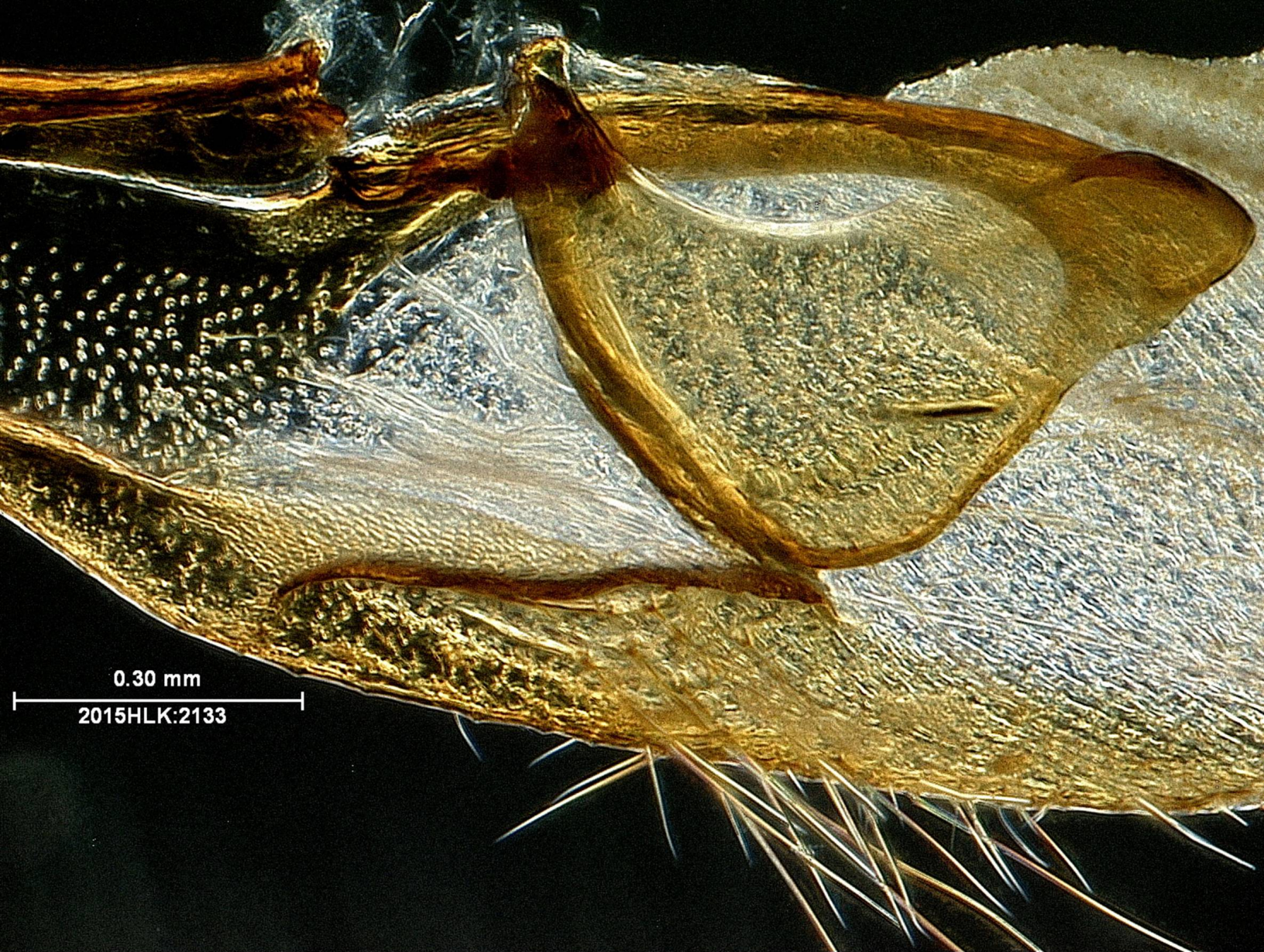


0.50 mm

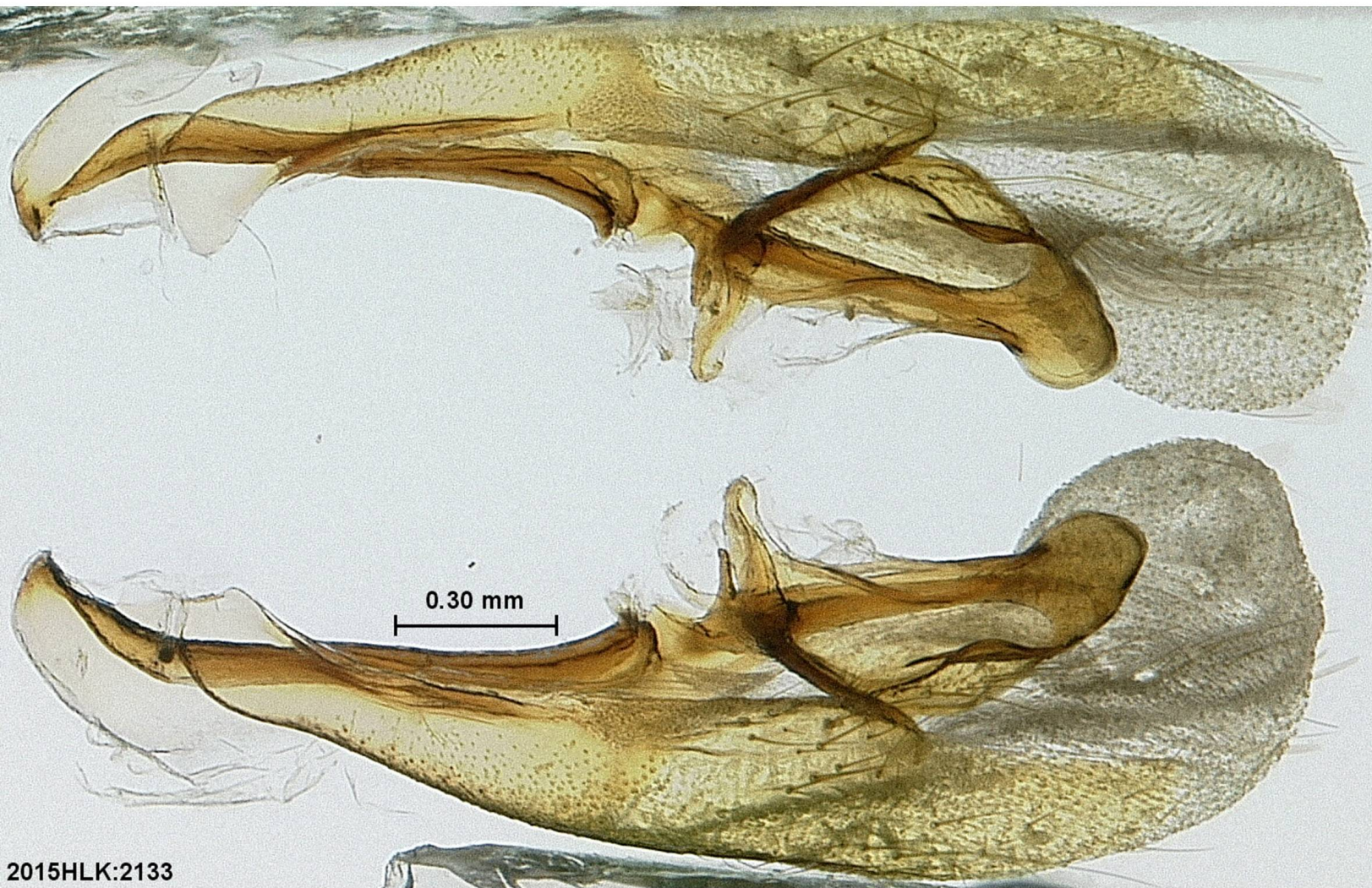
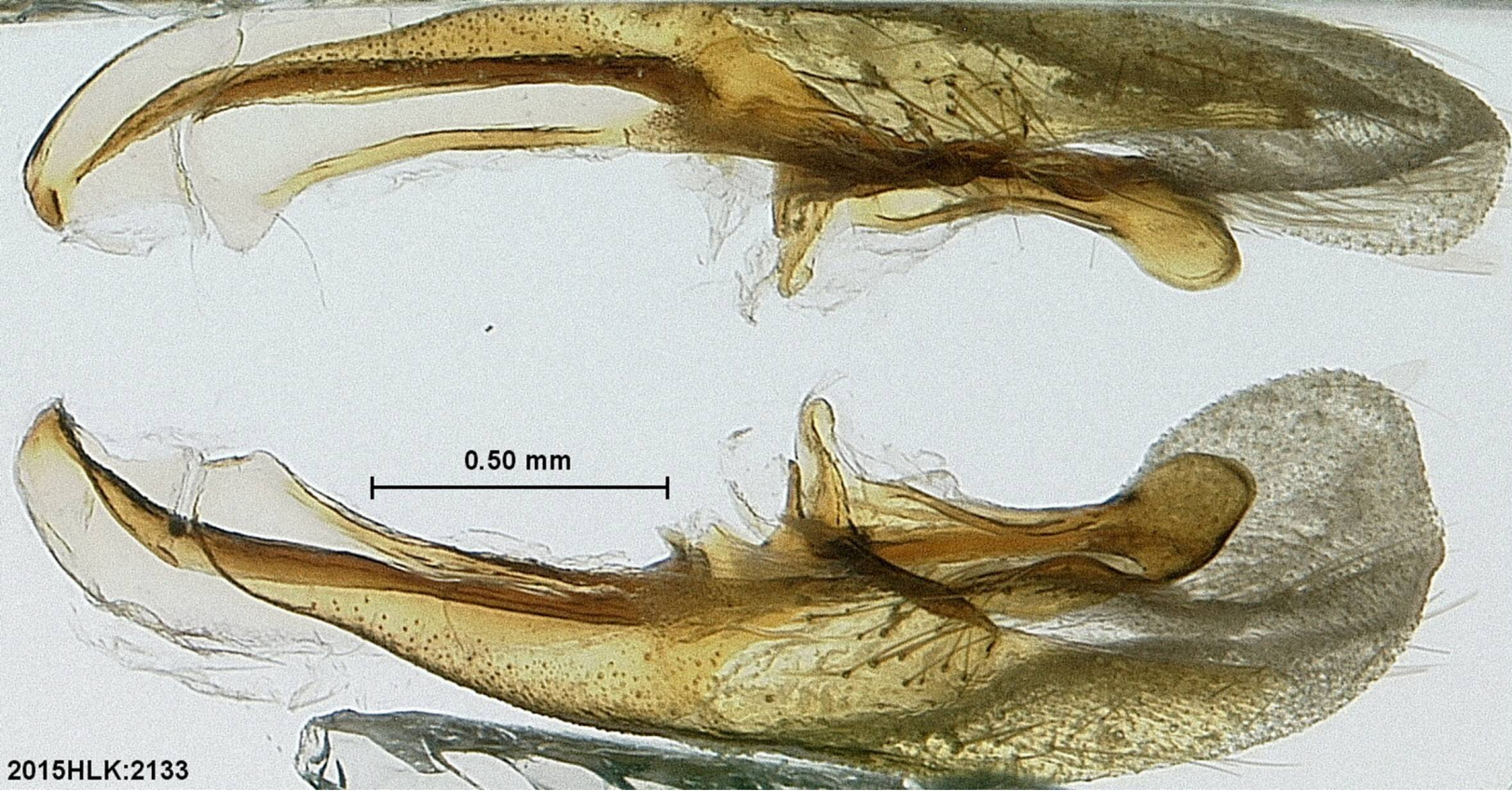
2015HLK:2133



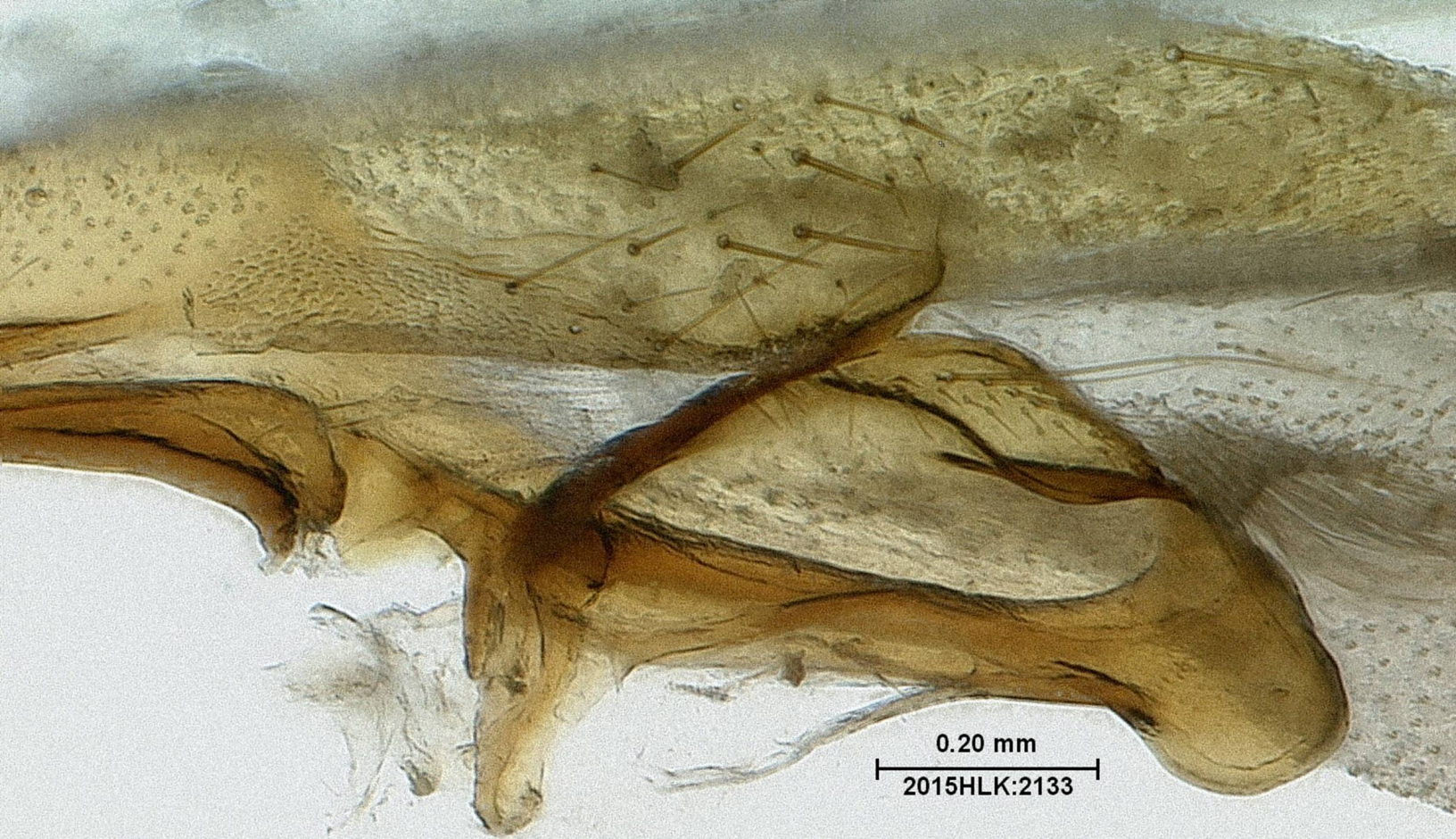
Valvae inner: left clasper detail



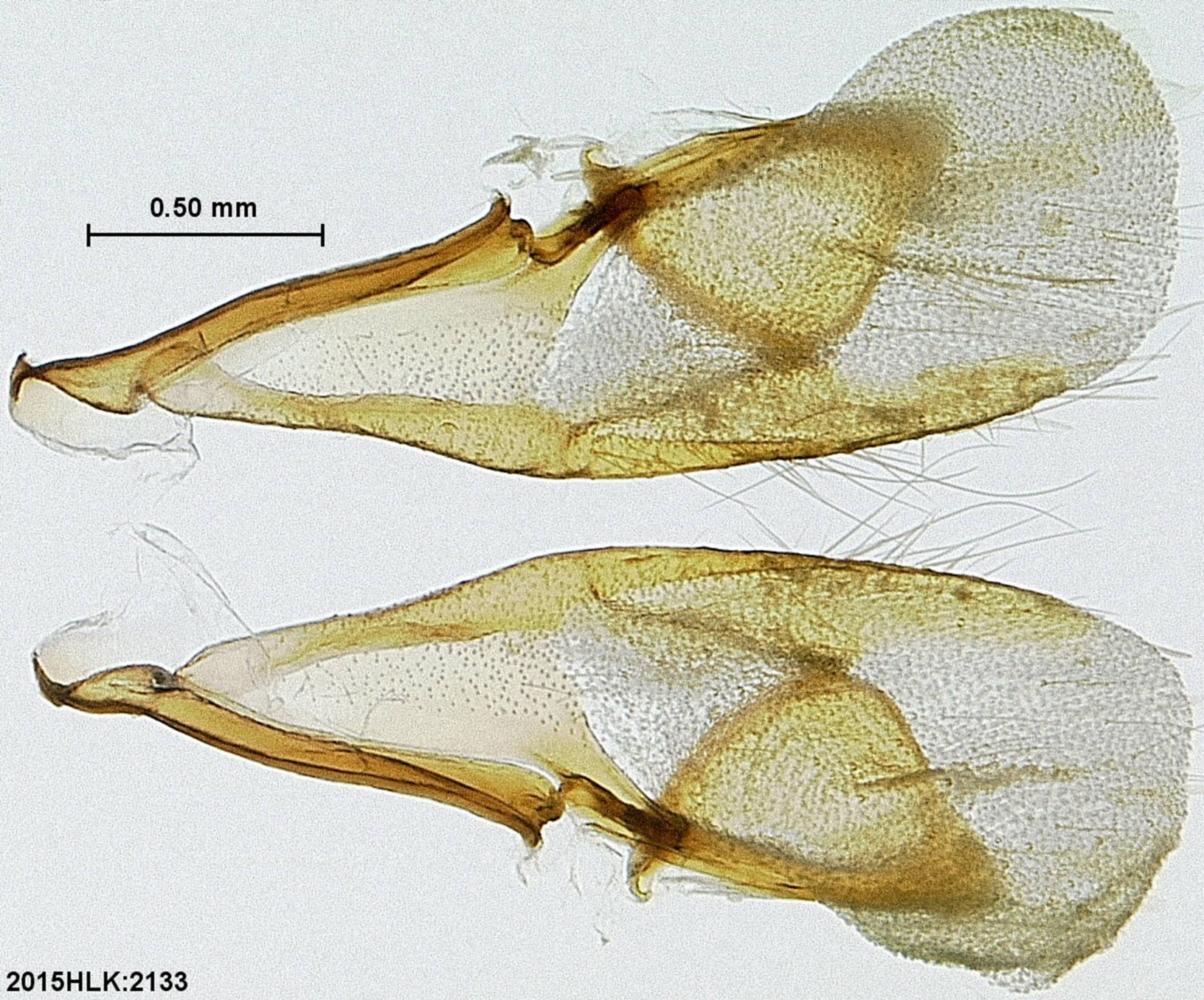
Valvae inner: right clasper detail



Valvae ventral (top) and ventral/inner (bottom)



Valvae ventral/inner: clasper detail



2015HLK:2133

Valvae outer



0.50 mm

2015HLK:2133

Valvae outer

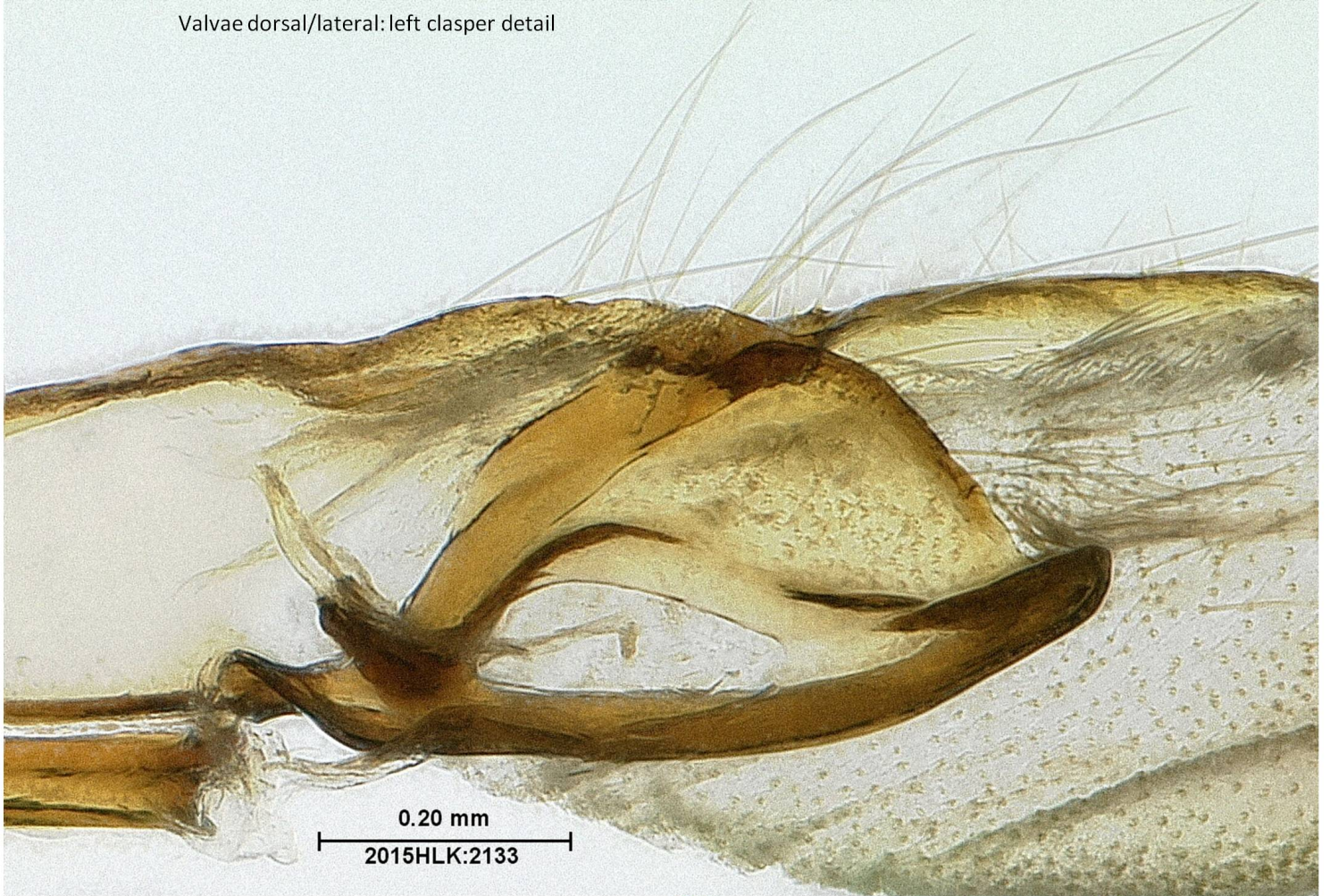


Valvae dorsal (top) and dorsal/inner (bottom)

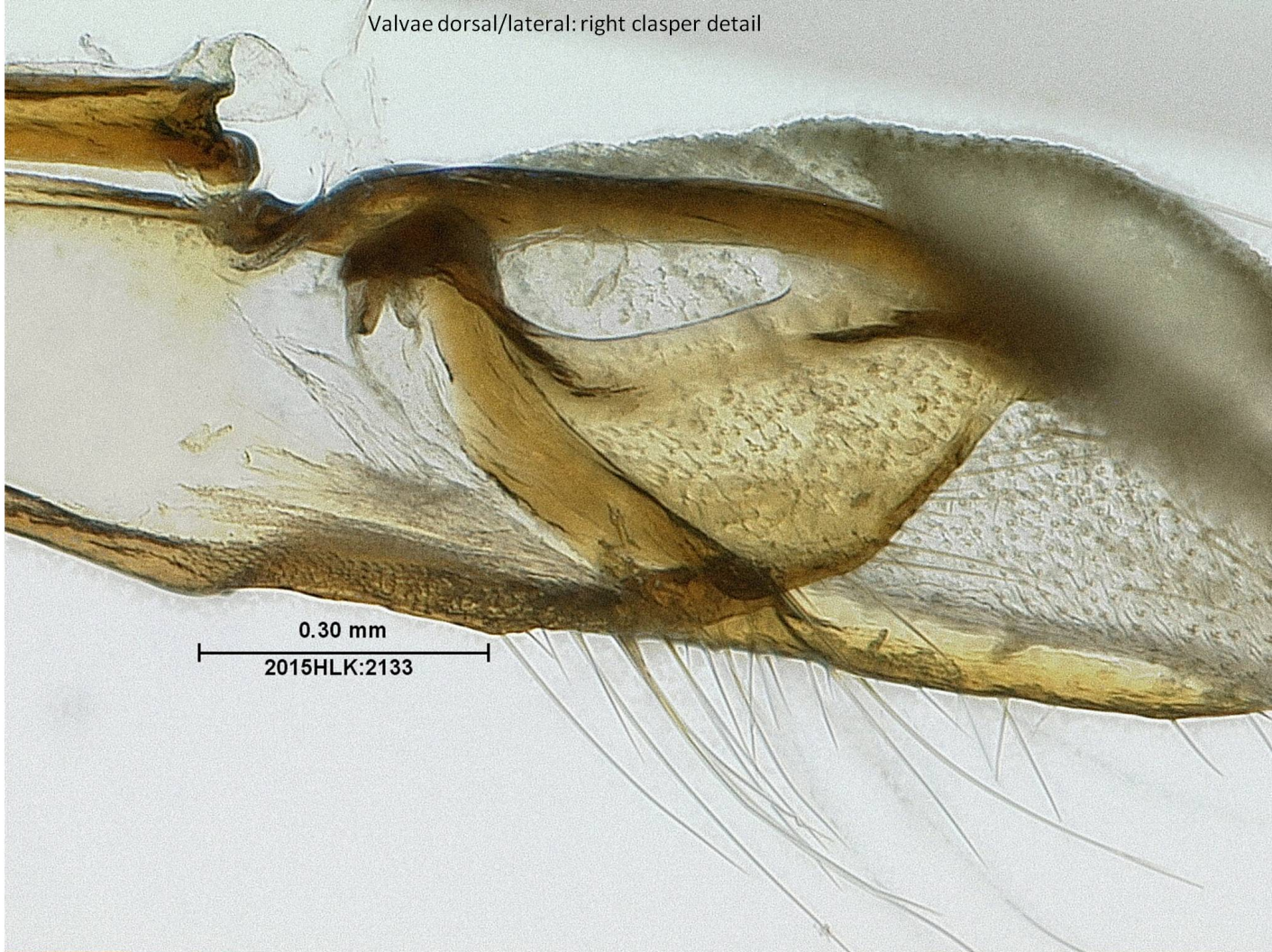


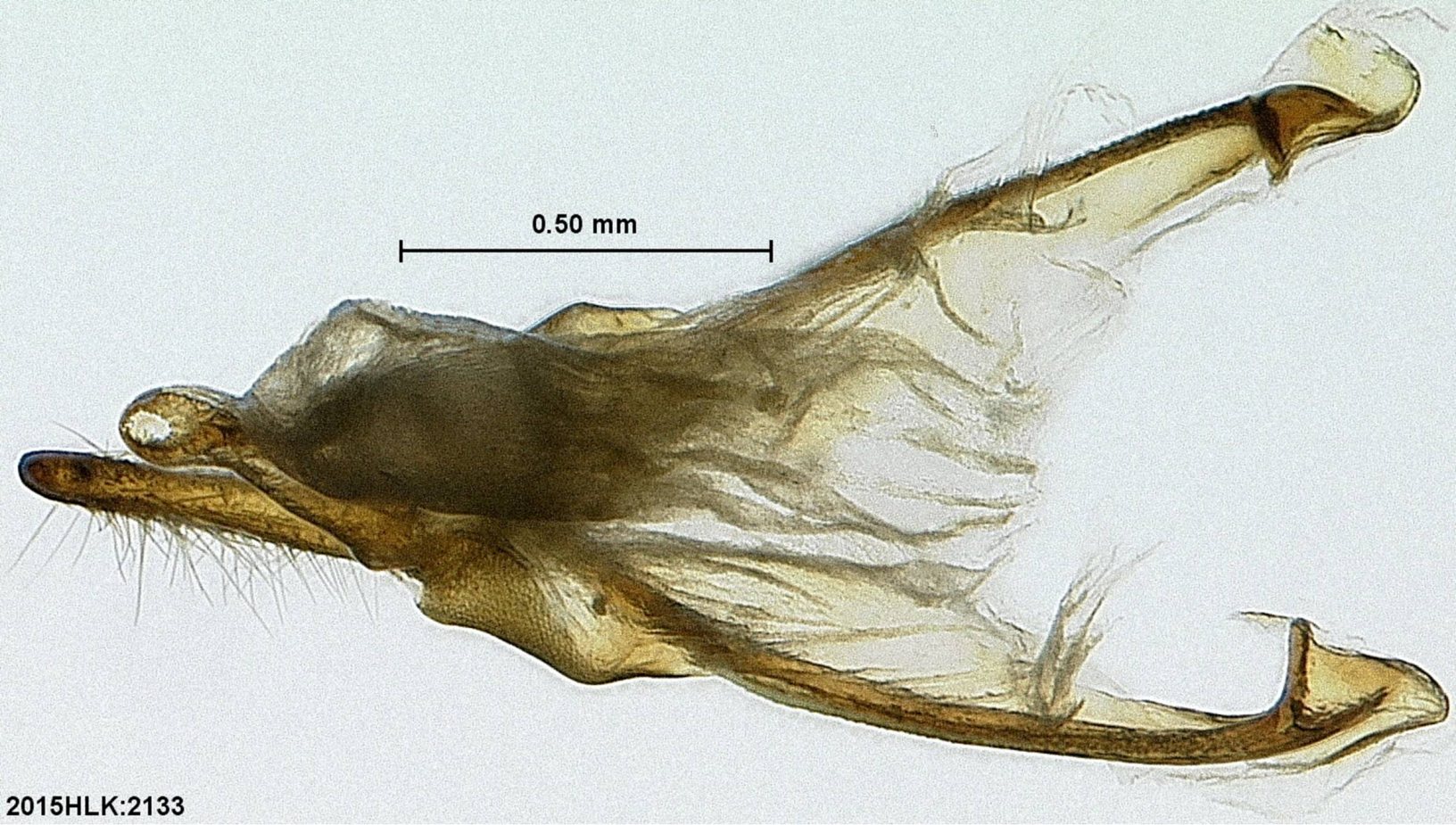
Valvae dorsal: left clasper detail

Valvae dorsal/lateral: left clasper detail

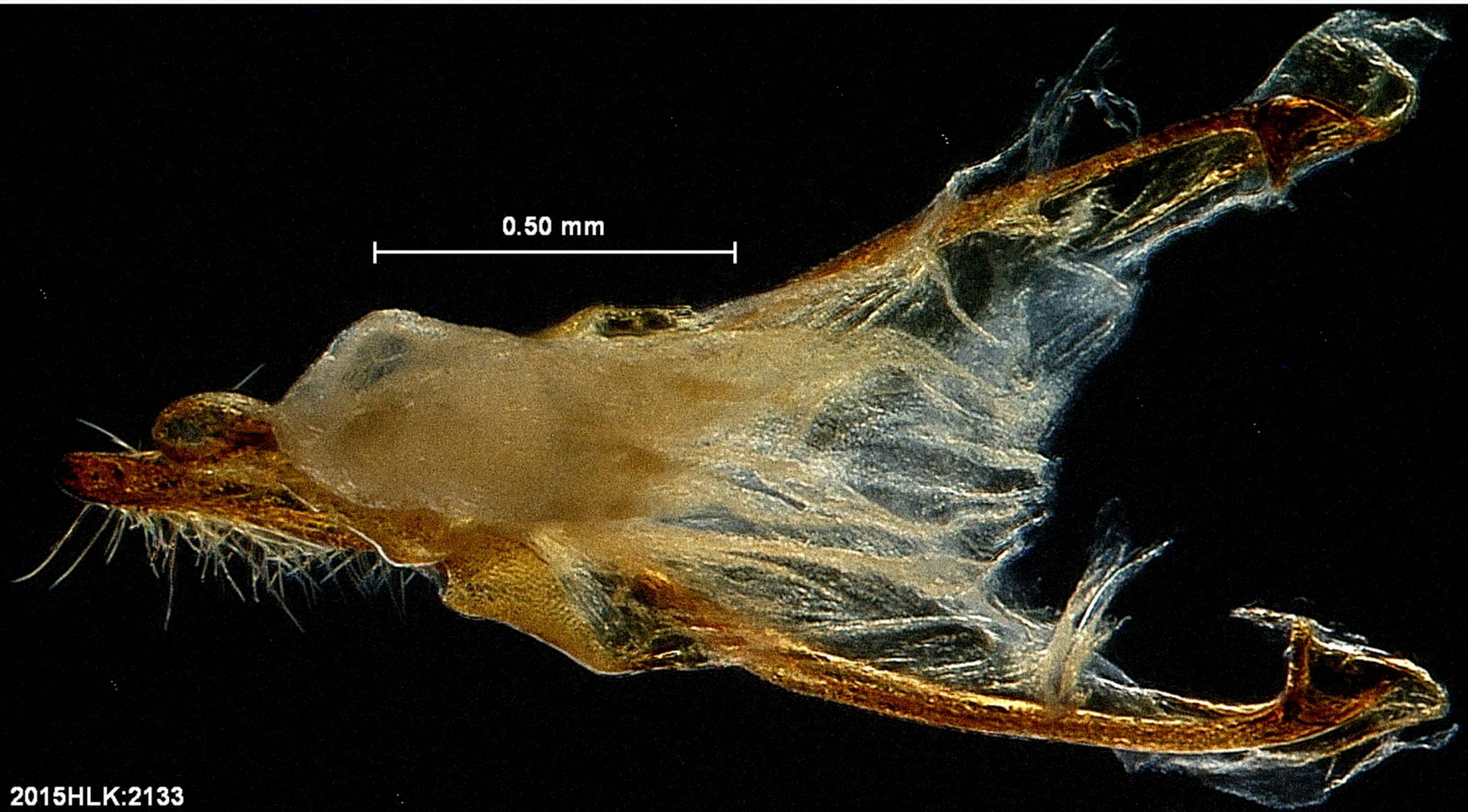


Valvae dorsal/lateral: right clasper detail

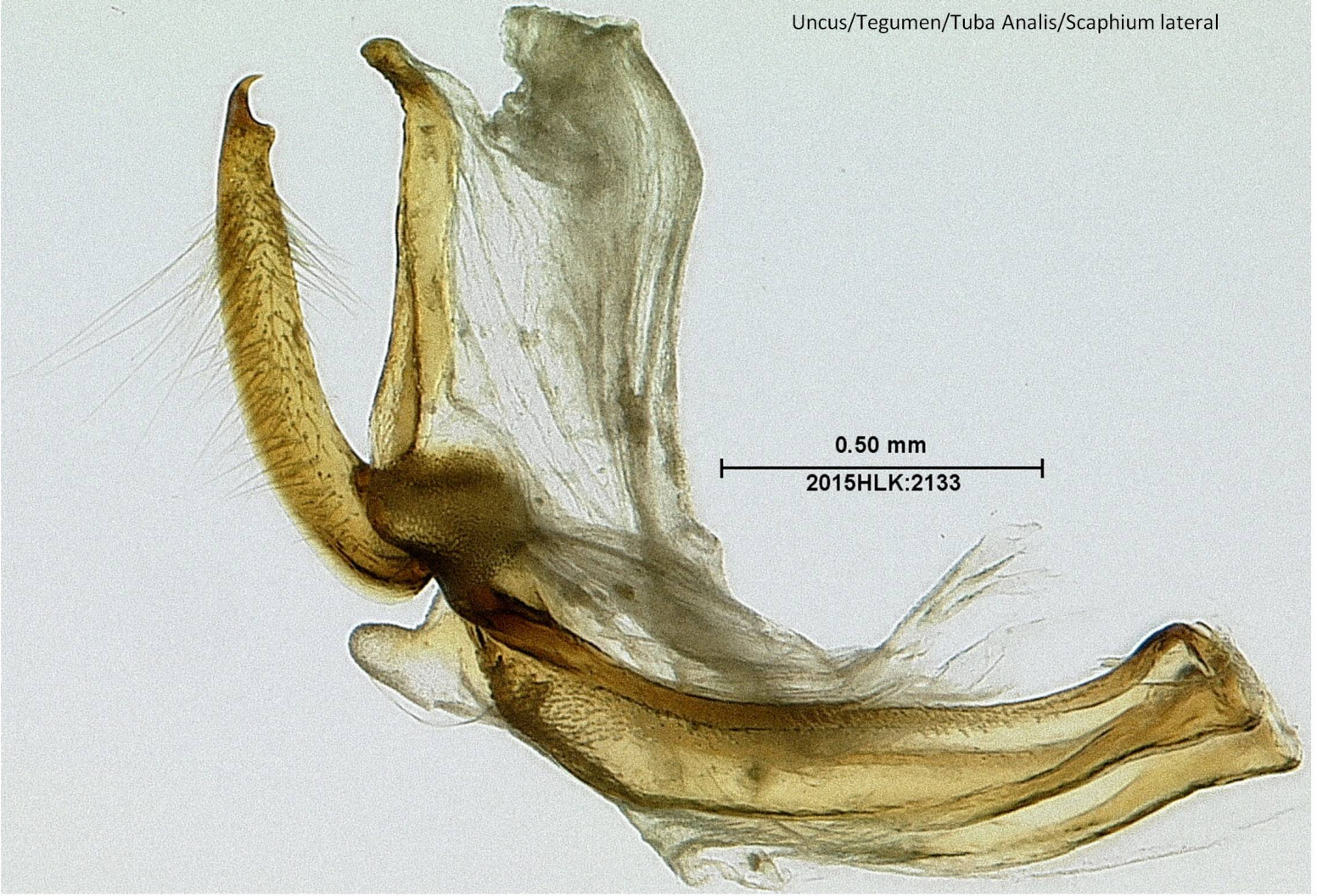




2015HLK:2133

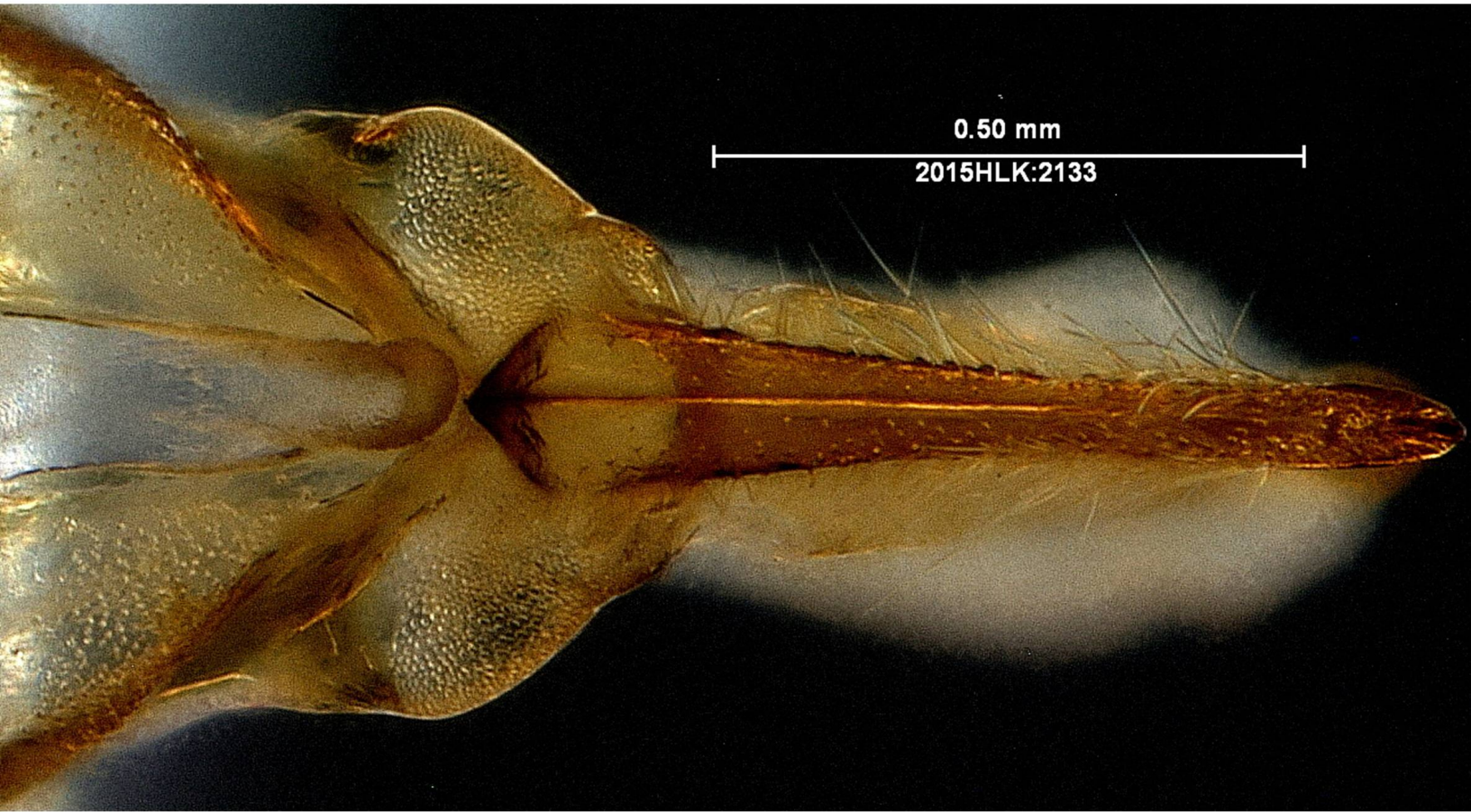
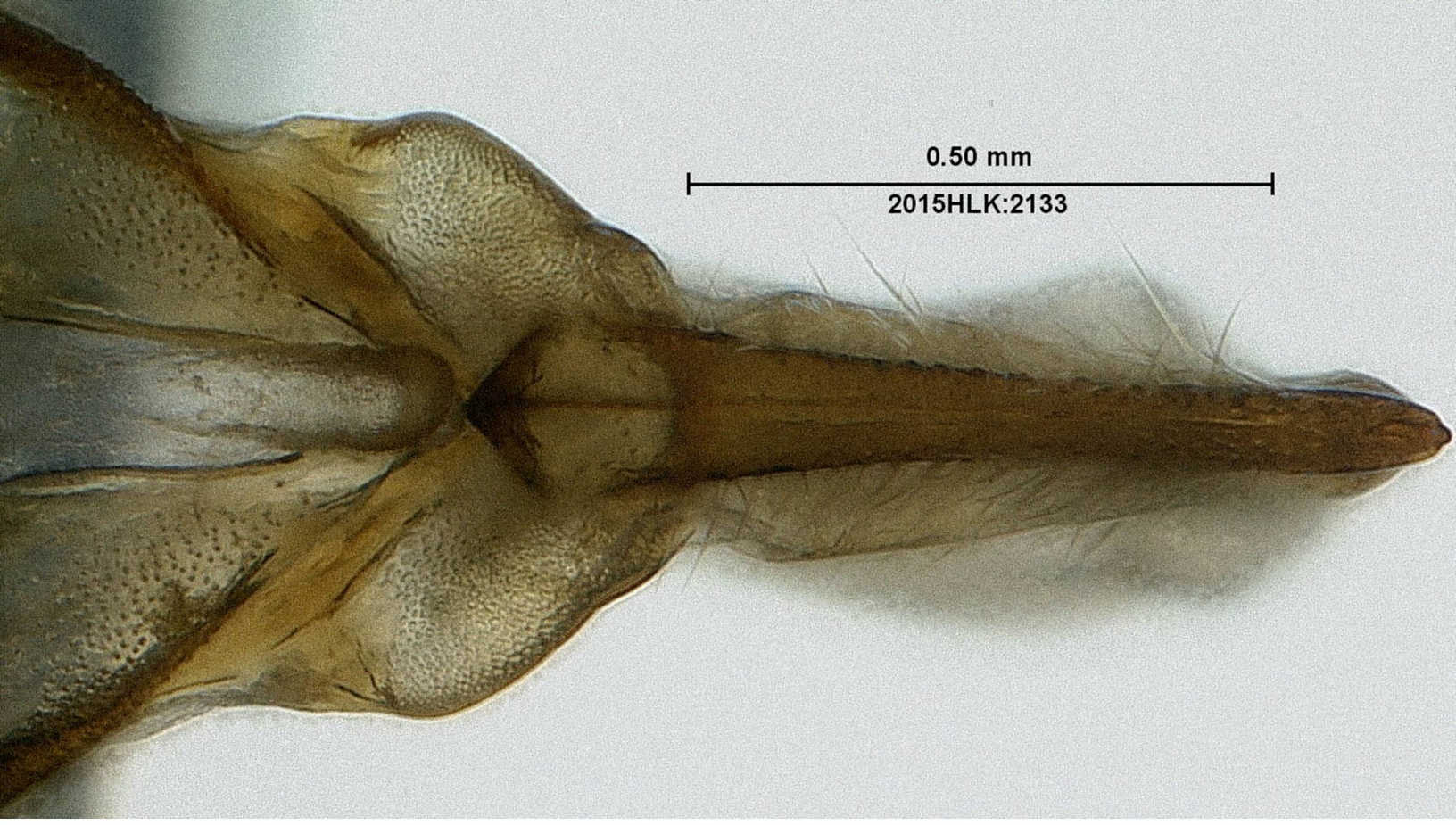


2015HLK:2133

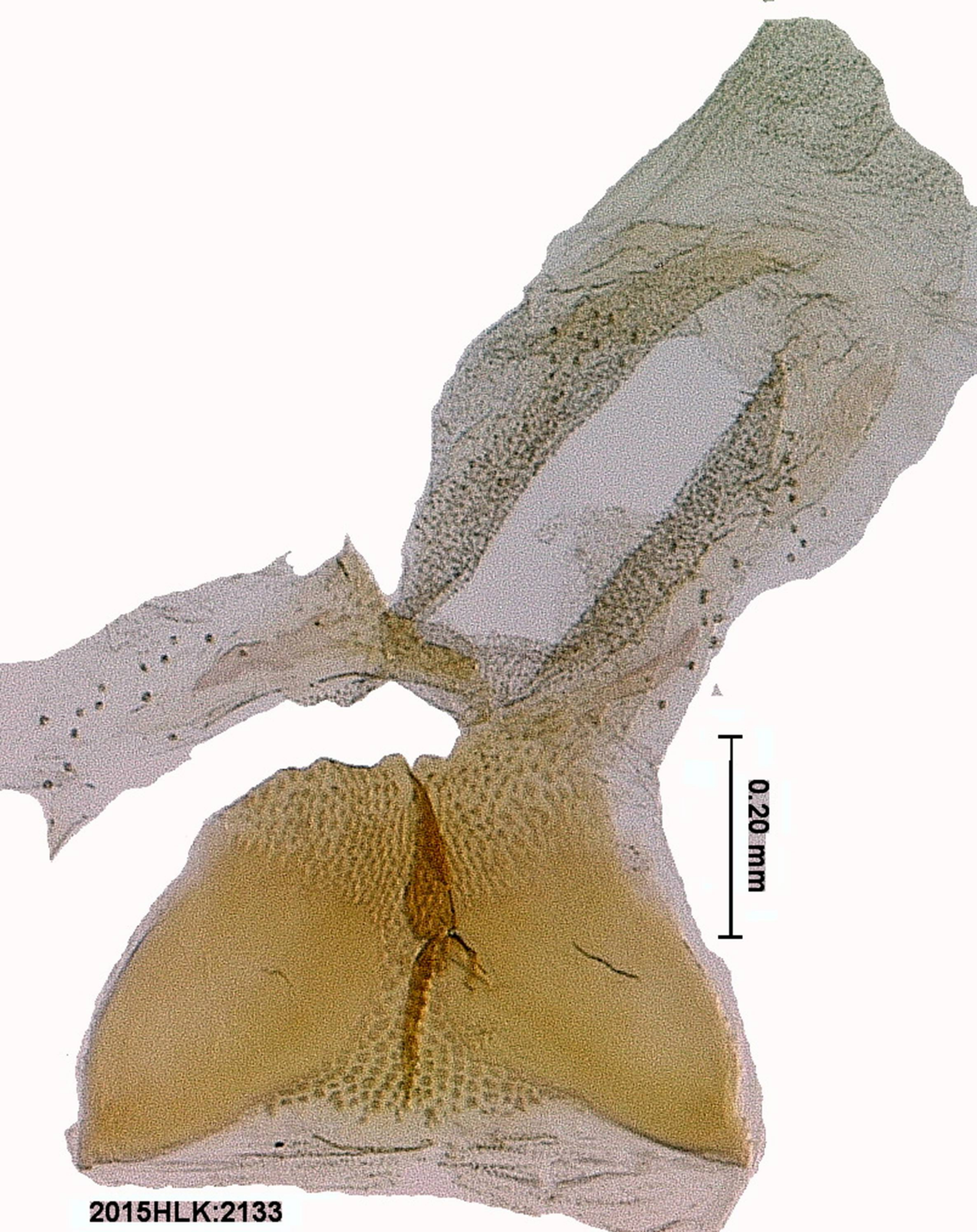


Uncus/Scaphium lateral



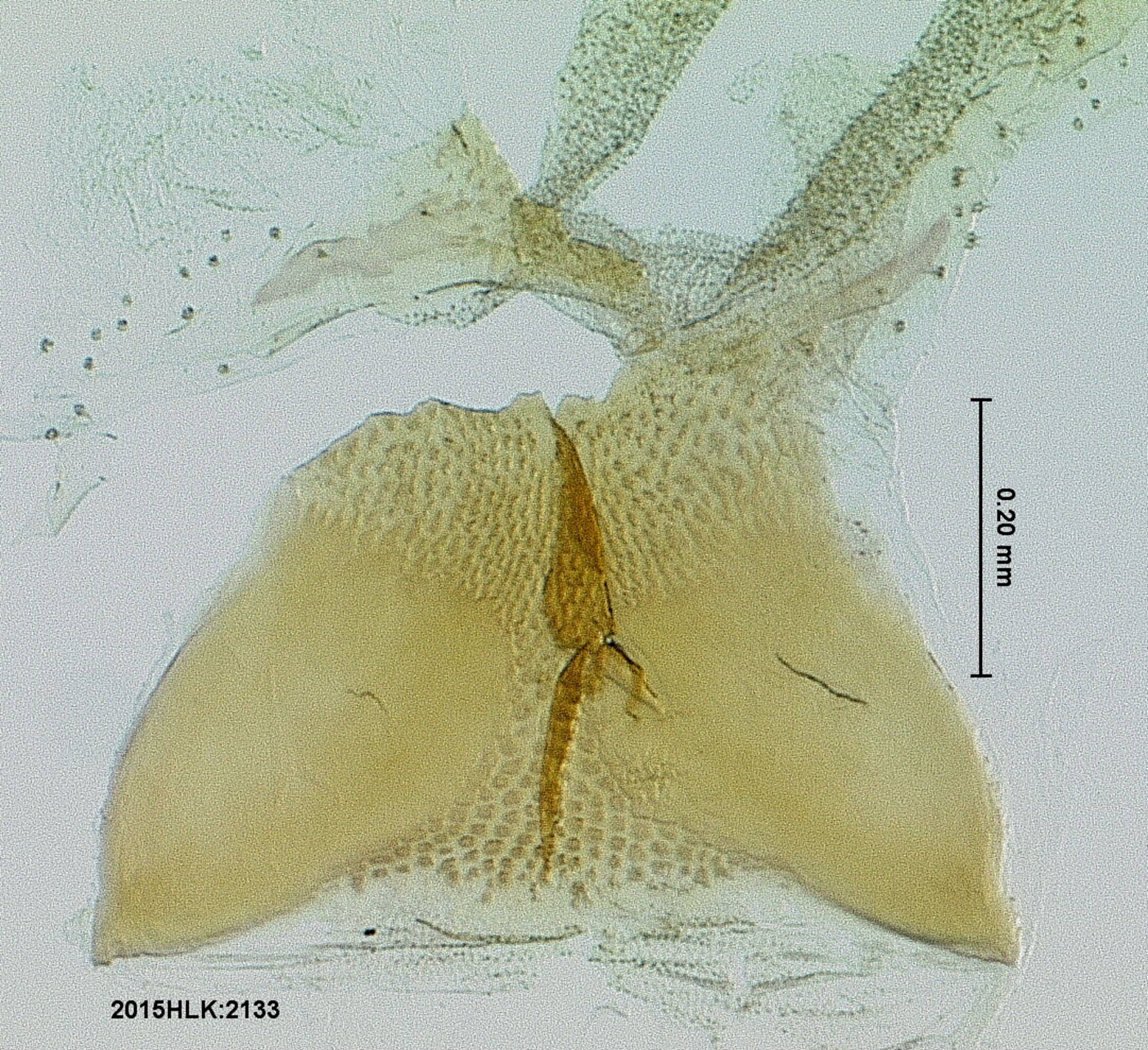


Uncus posterior



2015HLK:2133

Juxta/Anellus ventral



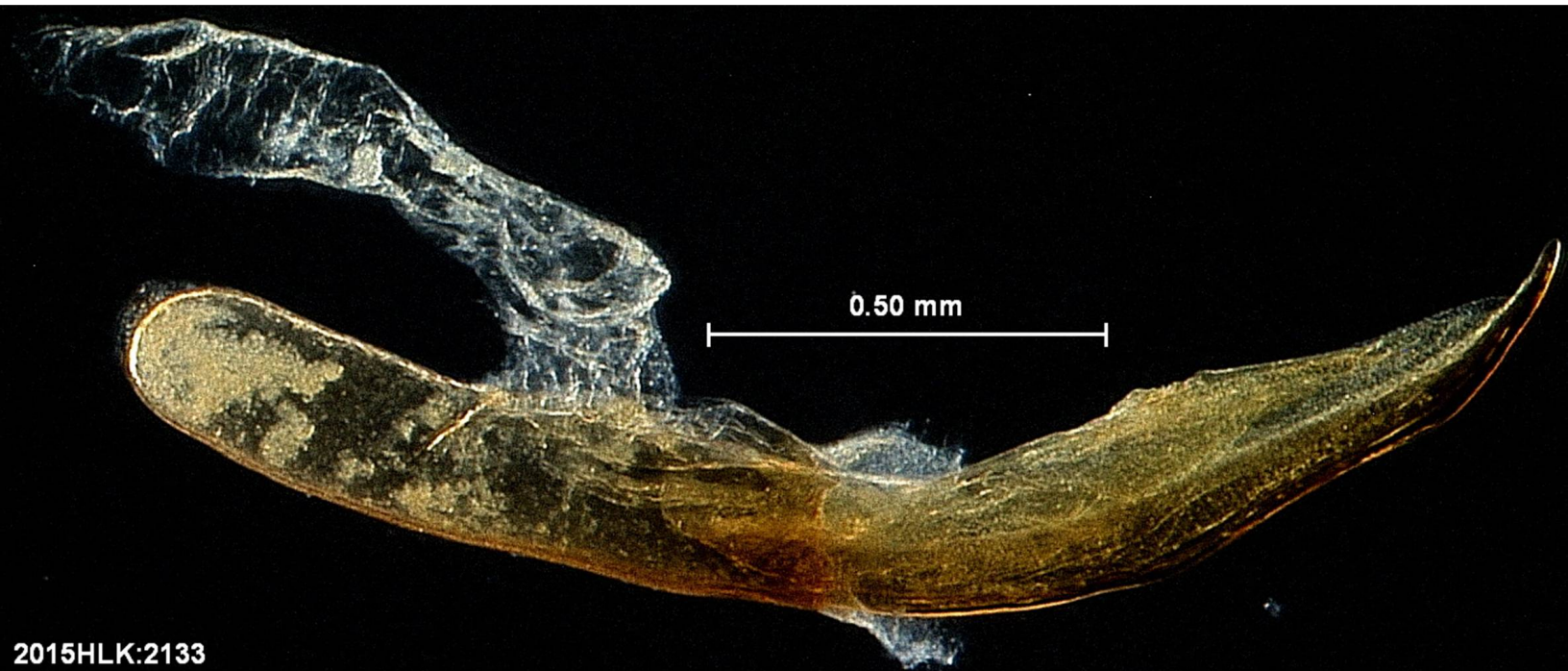
2015HLK:2133



Juxta/Anellus ventral



2015HLK:2133



2015HLK:2133

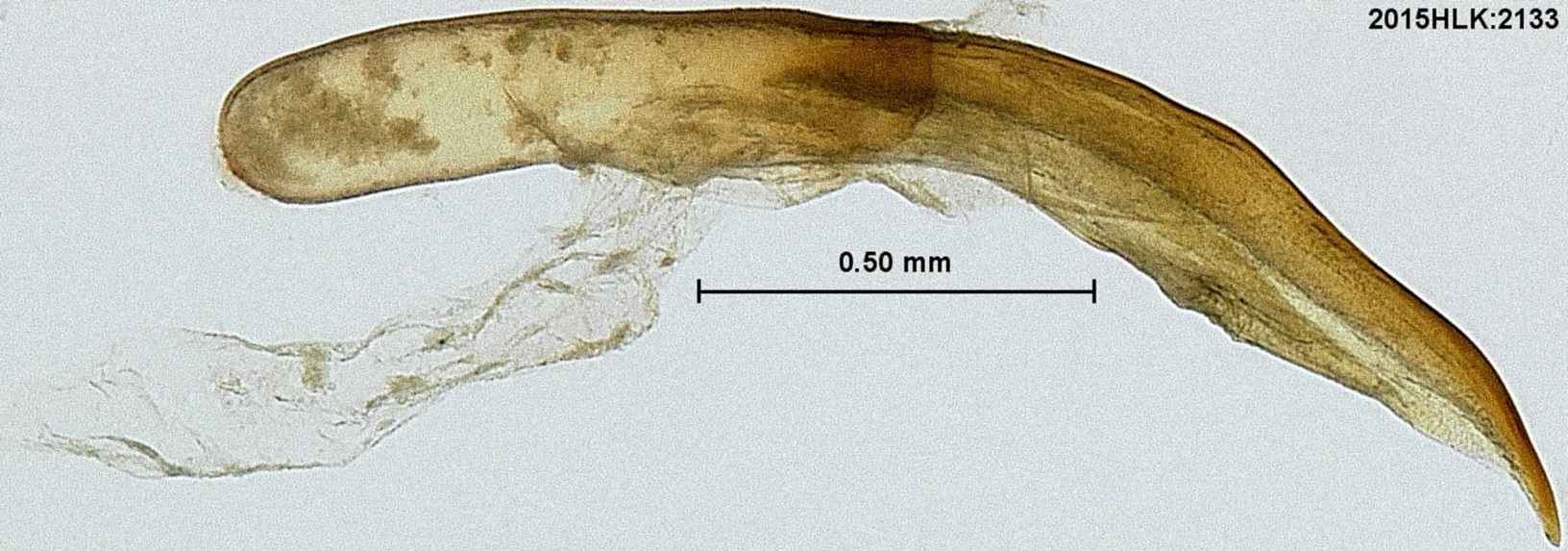
Phallus with Ductus Ejaculatorius



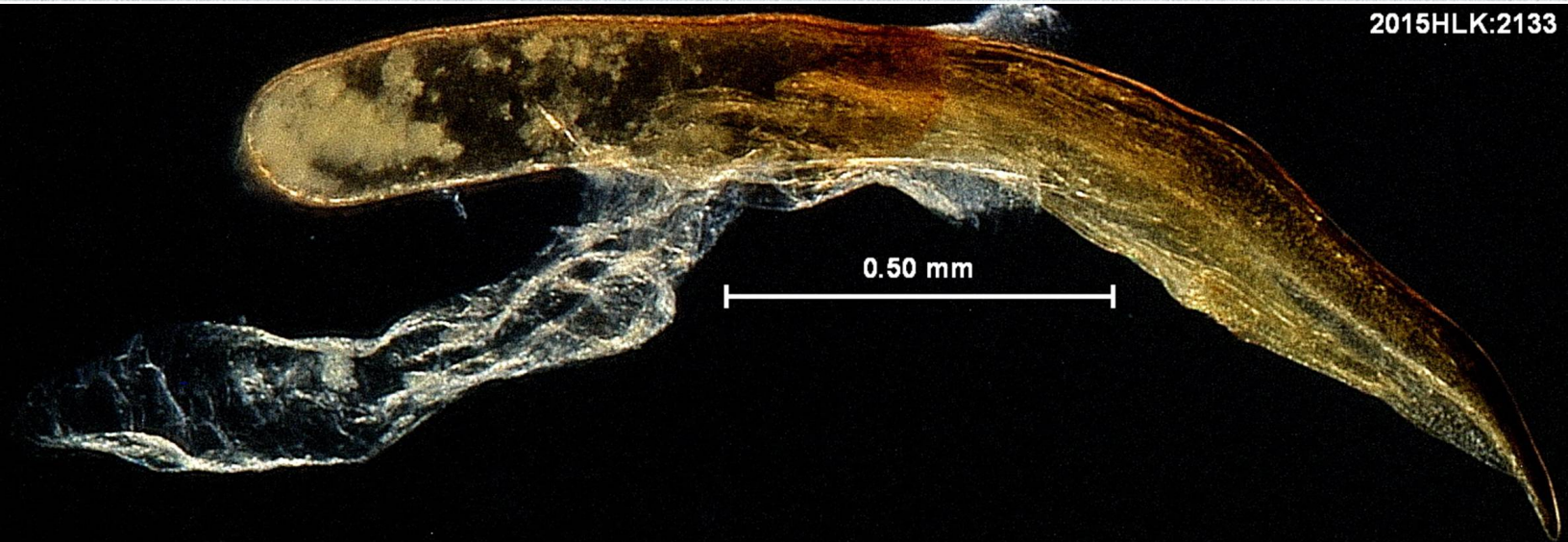
0.30 mm
2015HLK:2133

Ductus Ejaculatorius

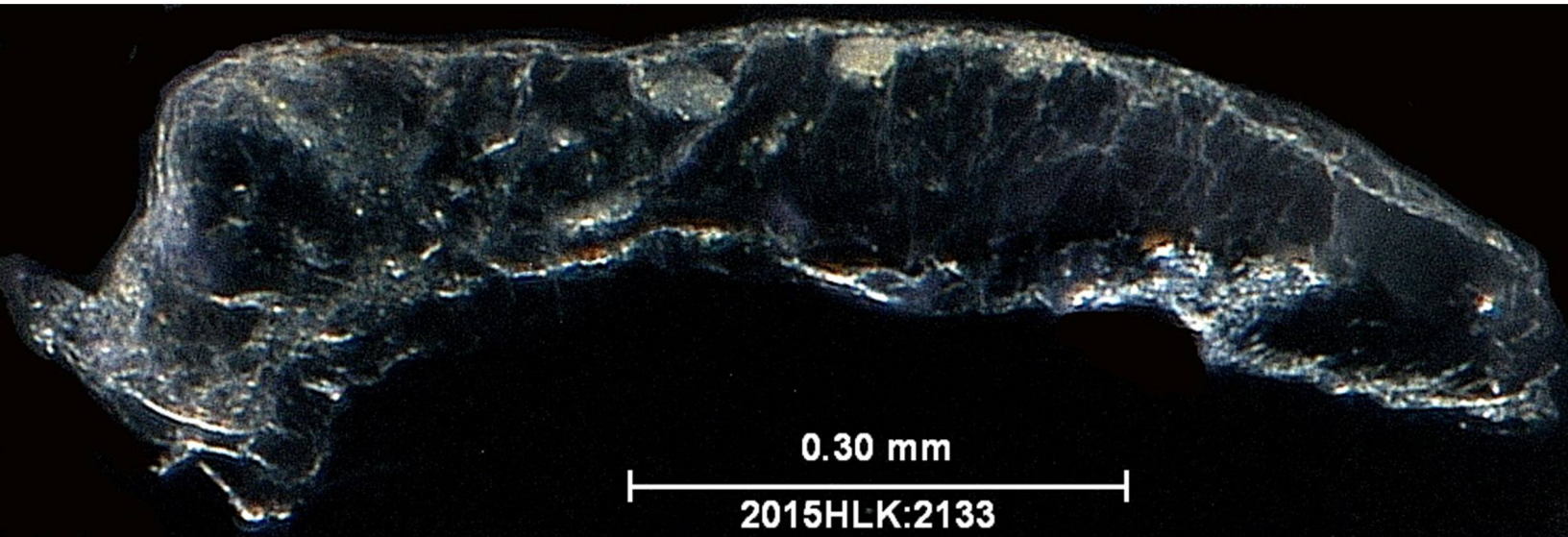
2015HLK:2133



2015HLK:2133



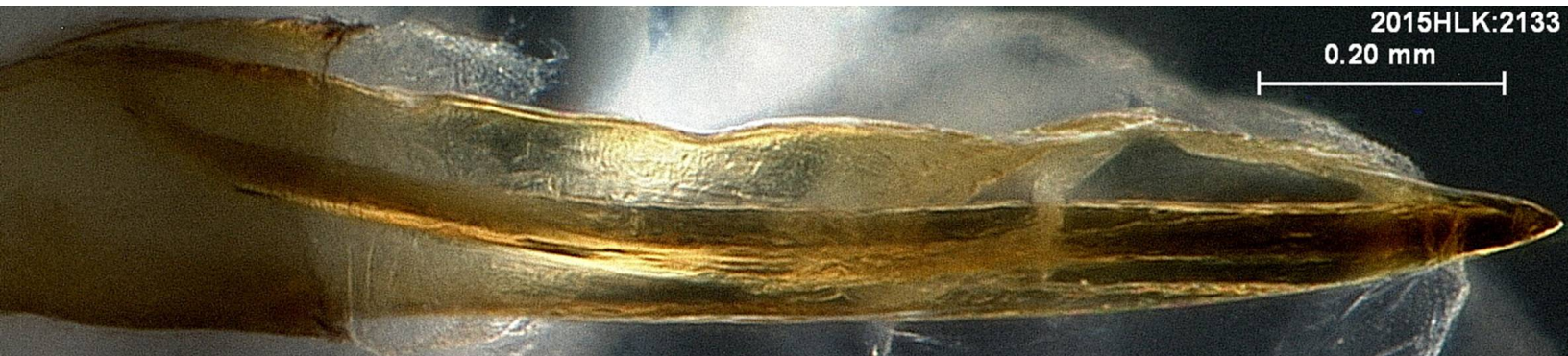
Phallus with Ductus Ejaculatorius



Ductus Ejaculatorius



Phallus with Vesica everted



Phallus ventral hood



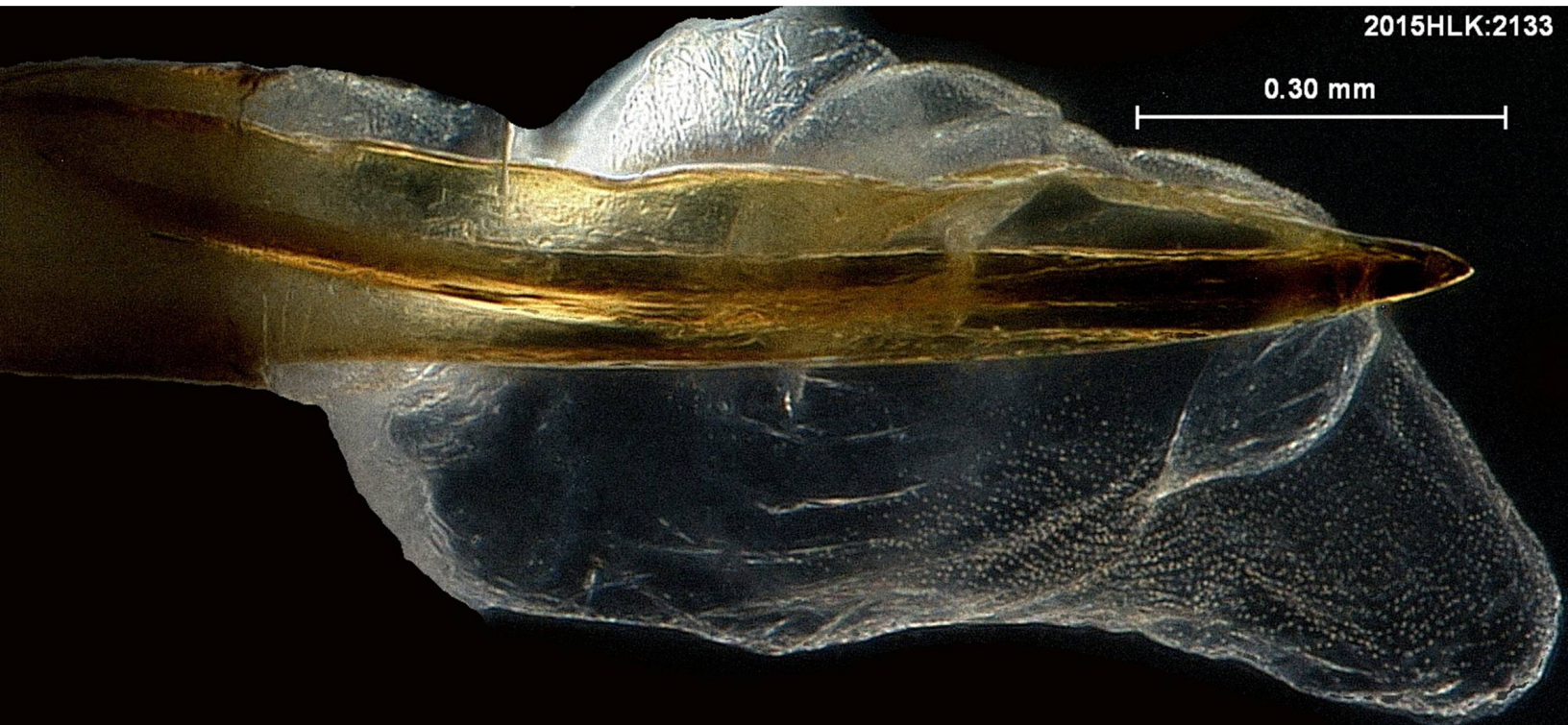
0.30 mm

2015HLK:2133

Phallus with Vesica everted

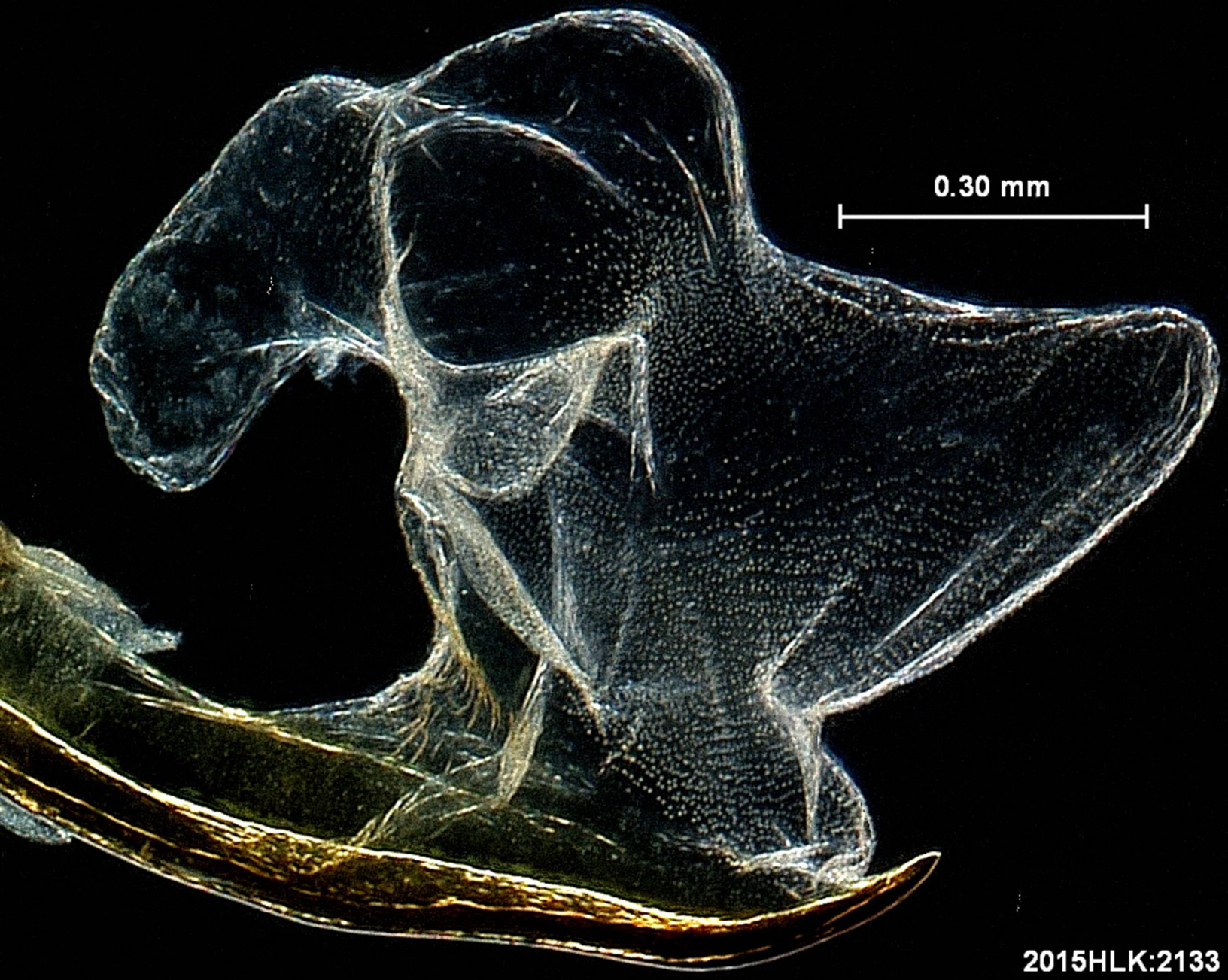


2015HLK:2133



2015HLK:2133

Vesica



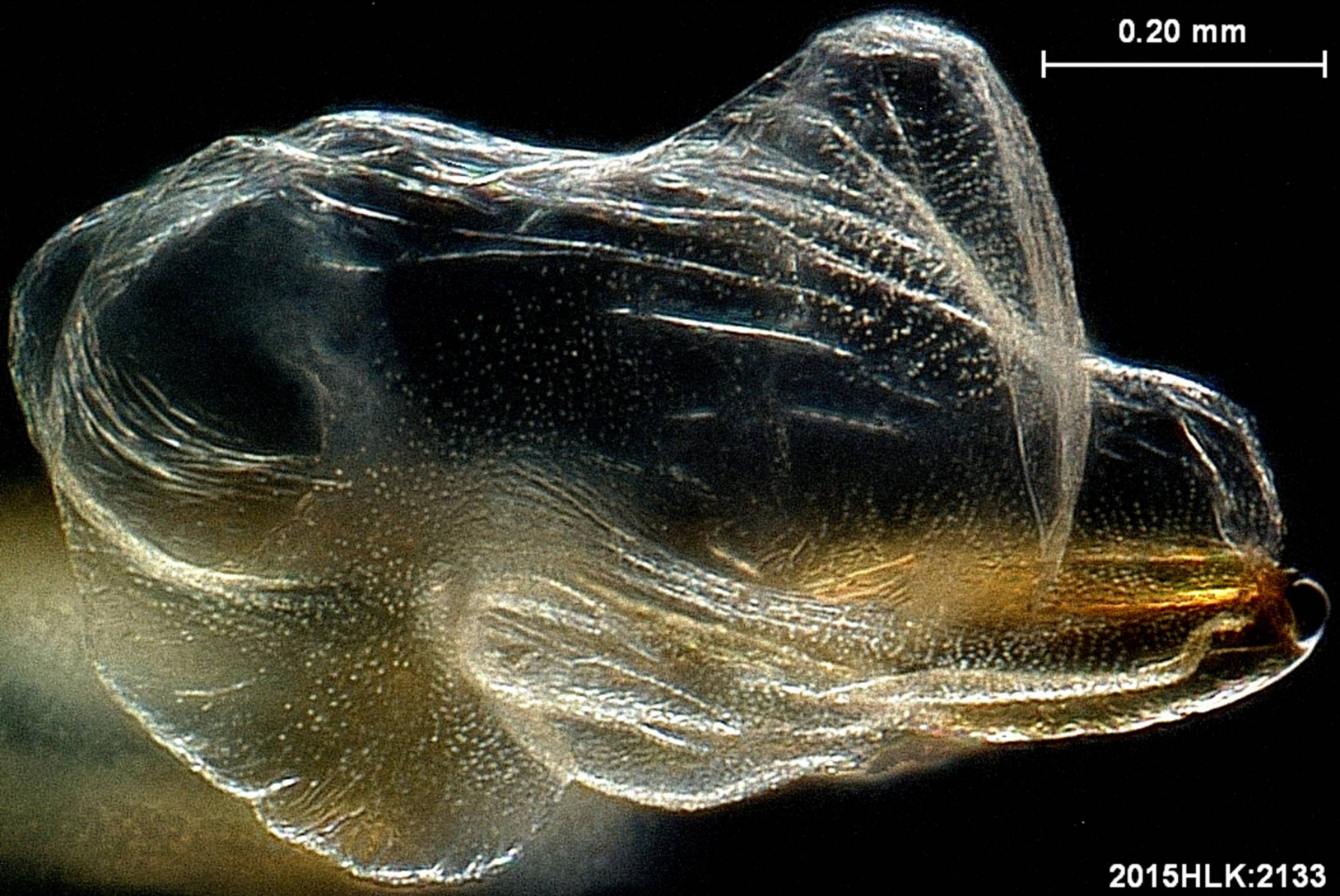
2015HLK:2133

Vesica

2015HLK:2133

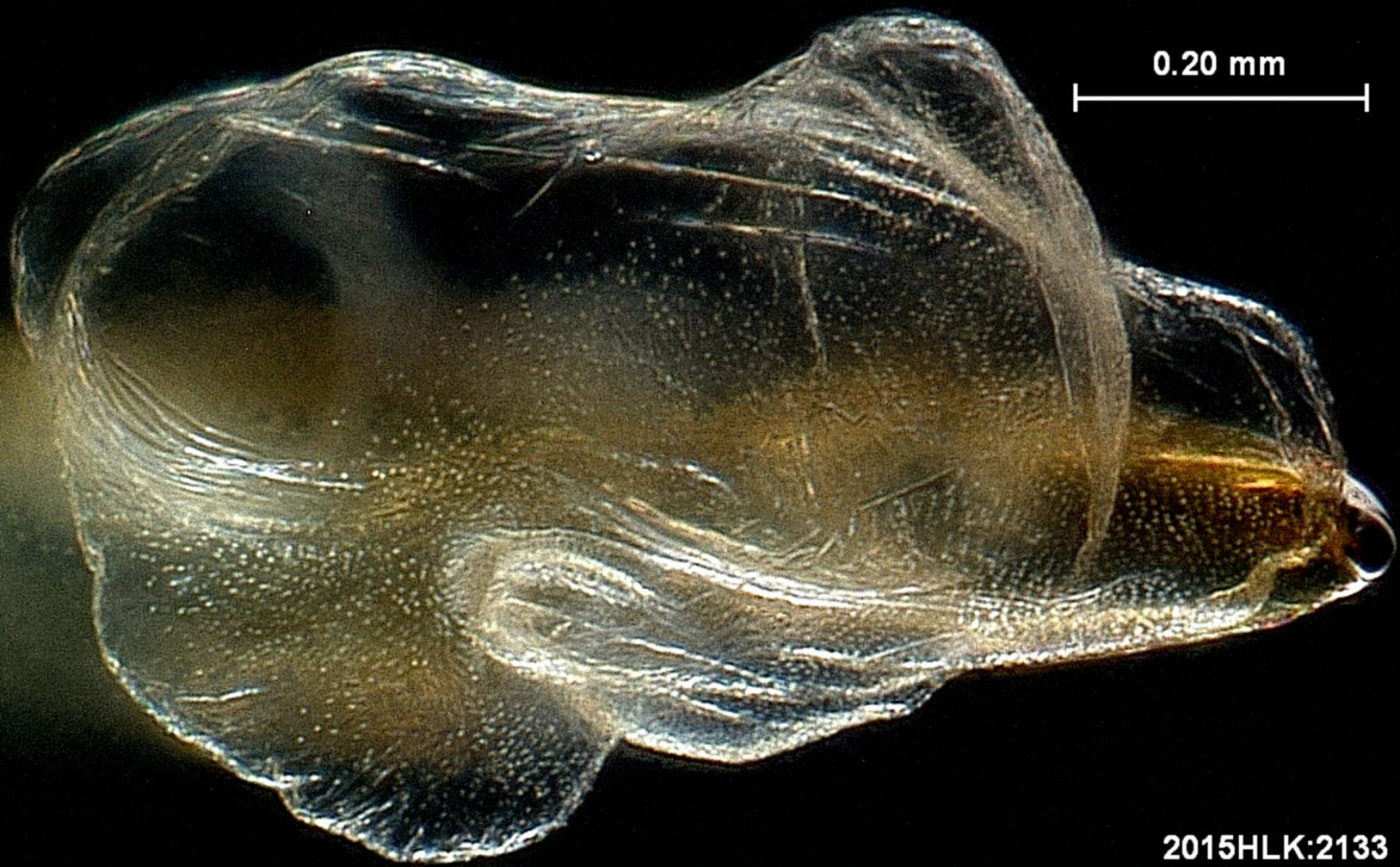


0.20 mm

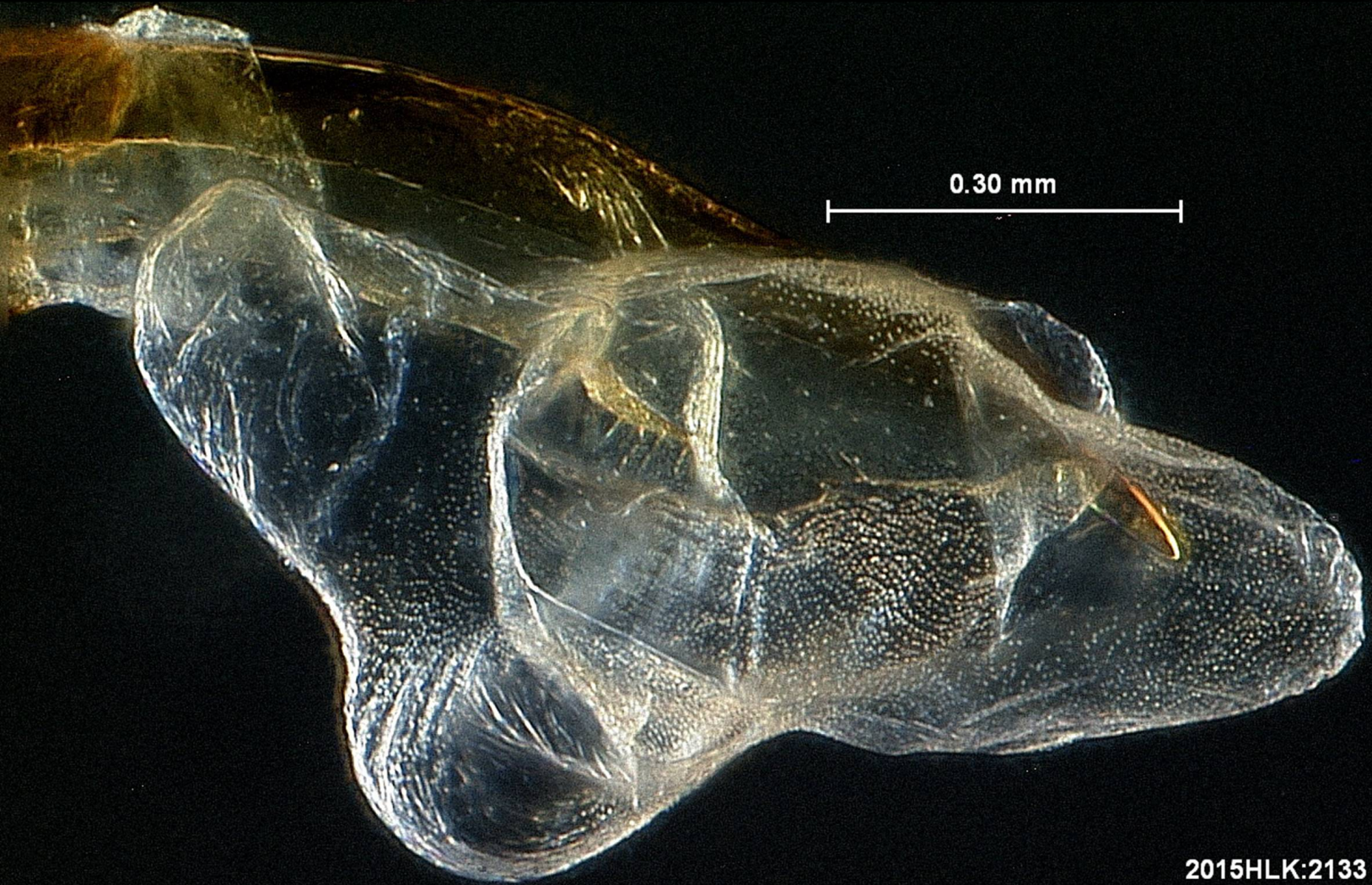


2015HLK:2133

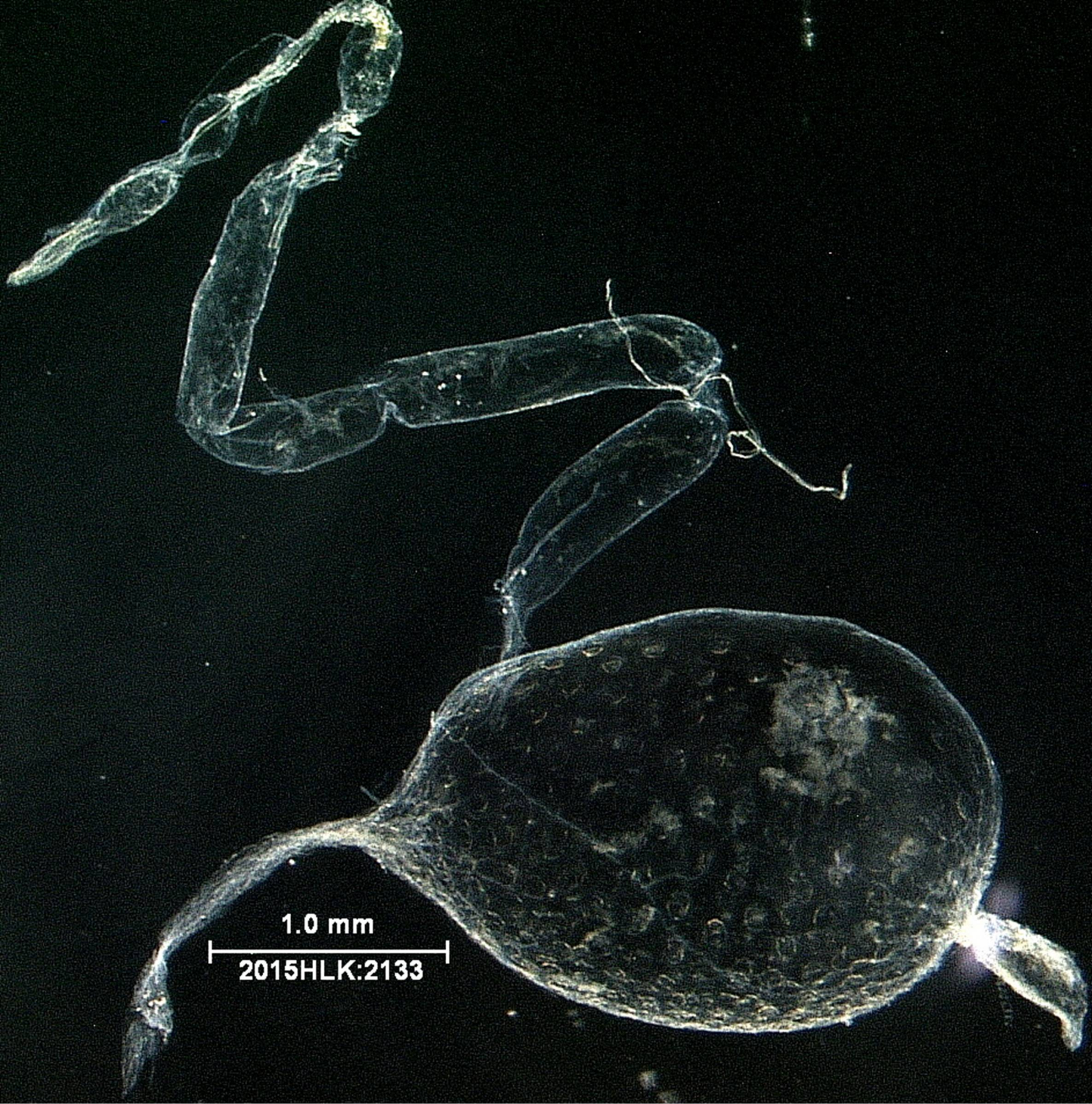
Vesica



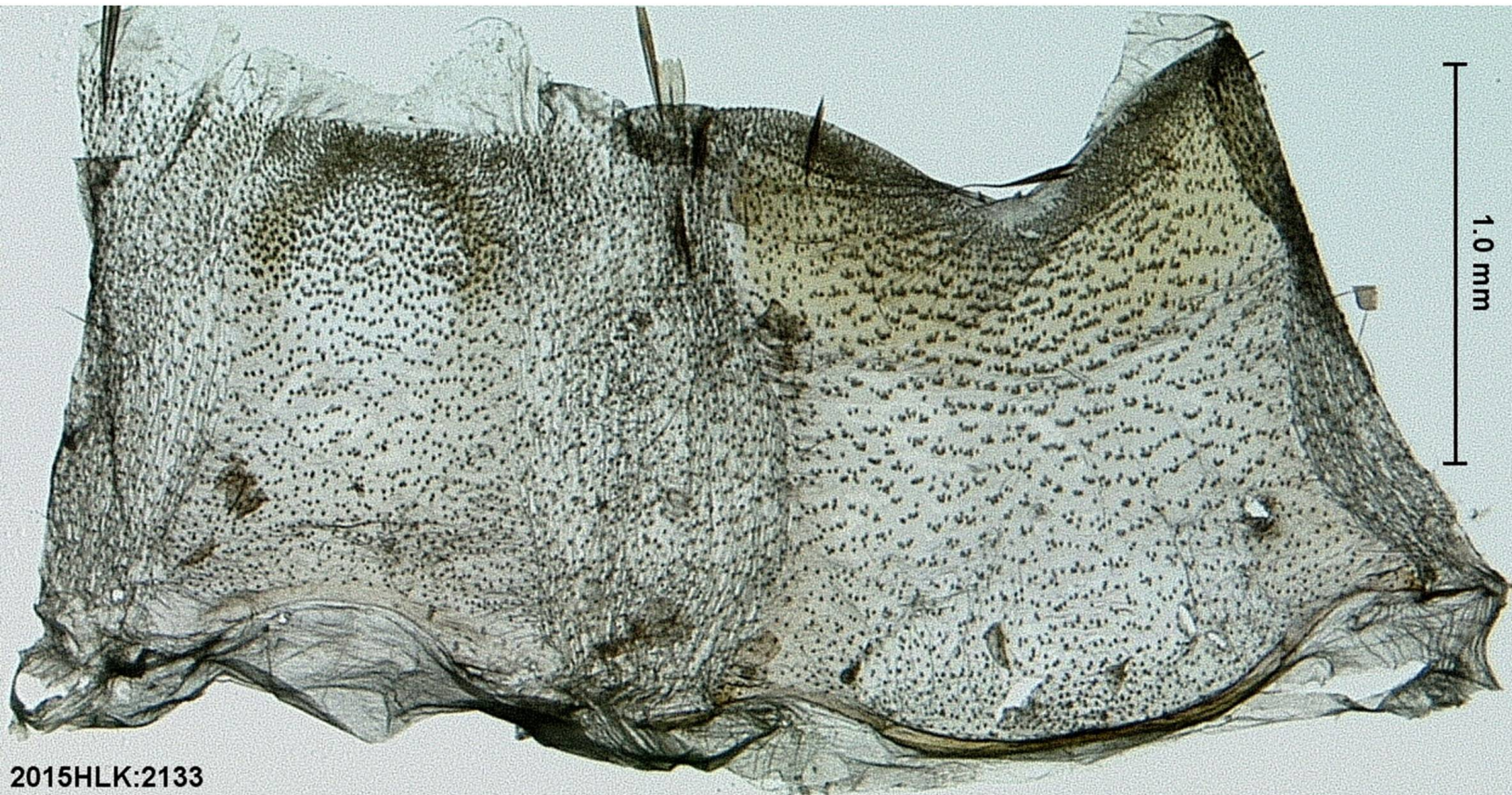
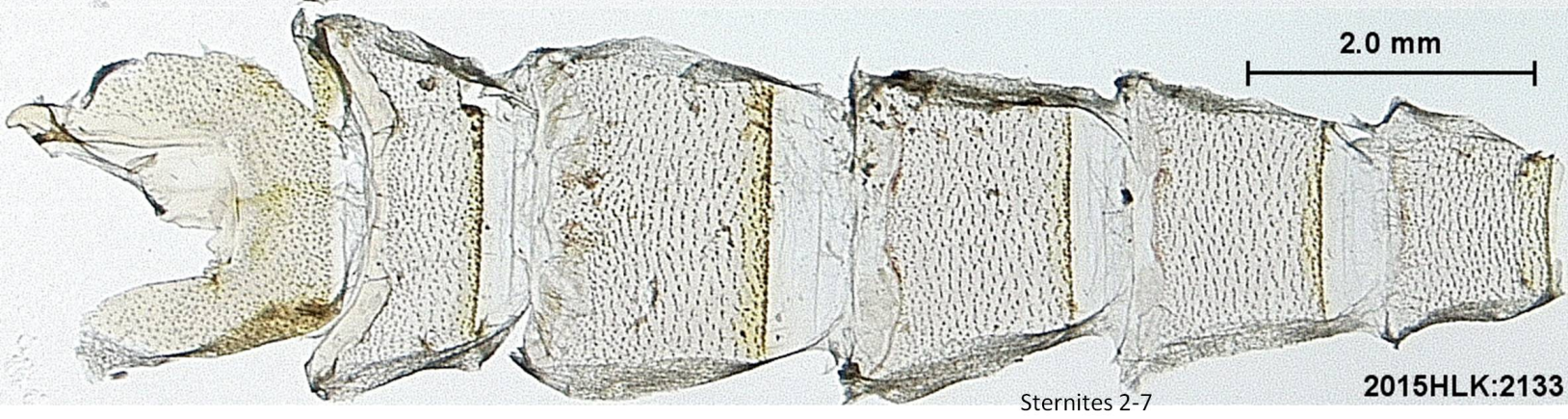
2015HLK:2133



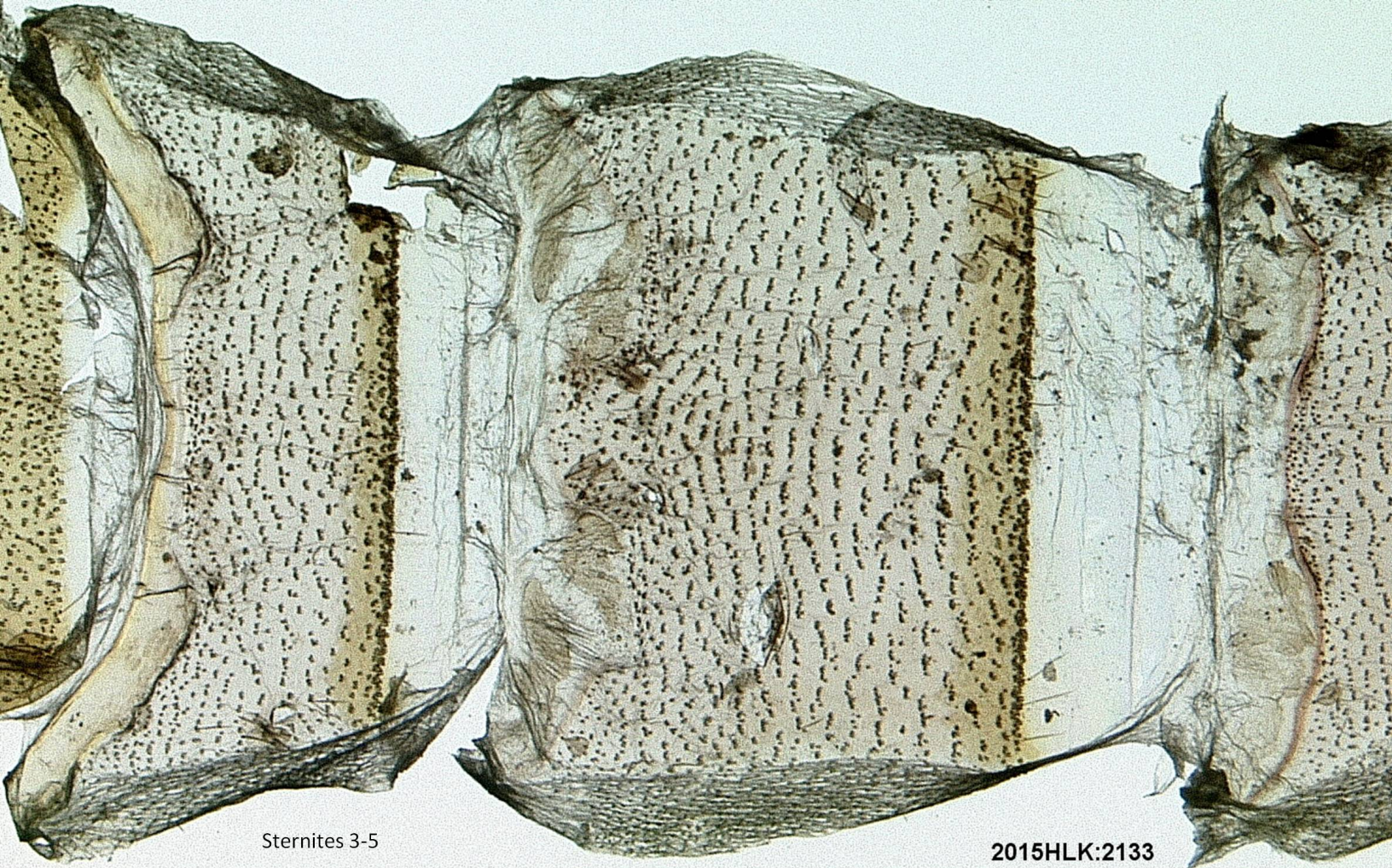
2015HLK:2133



Rectum

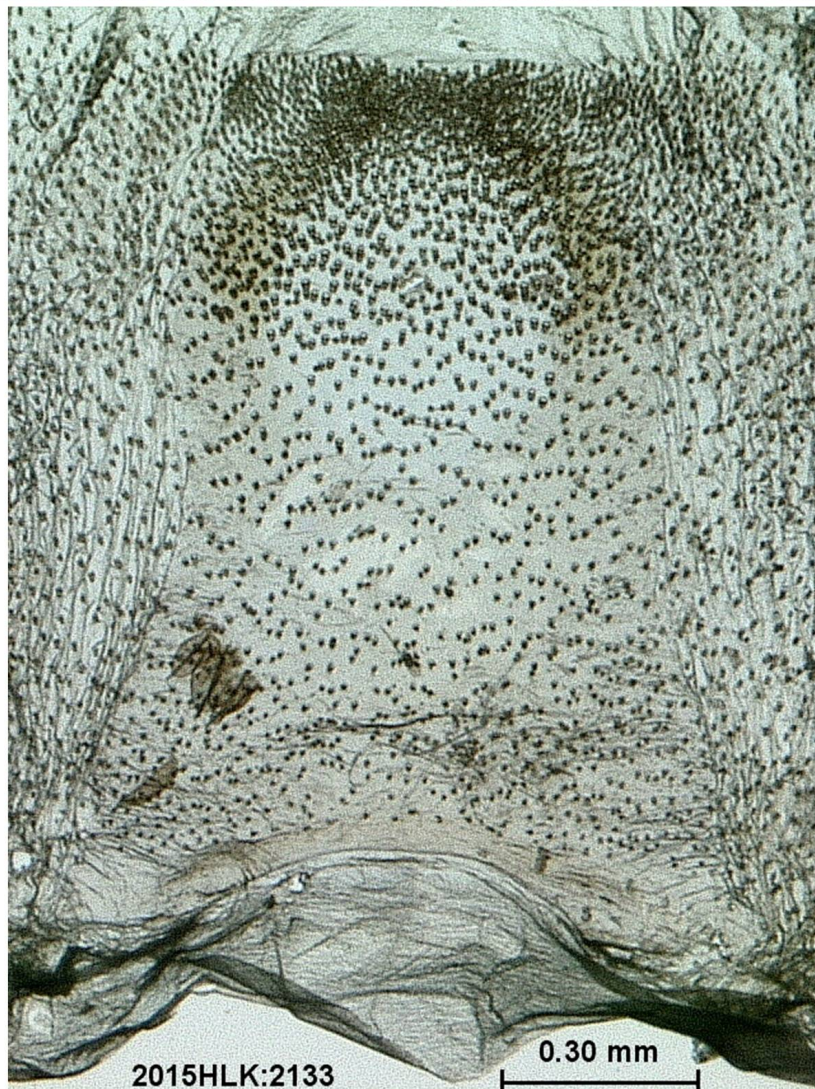


Segment 8: tergite (left), sternite (right)



Sternites 3-5

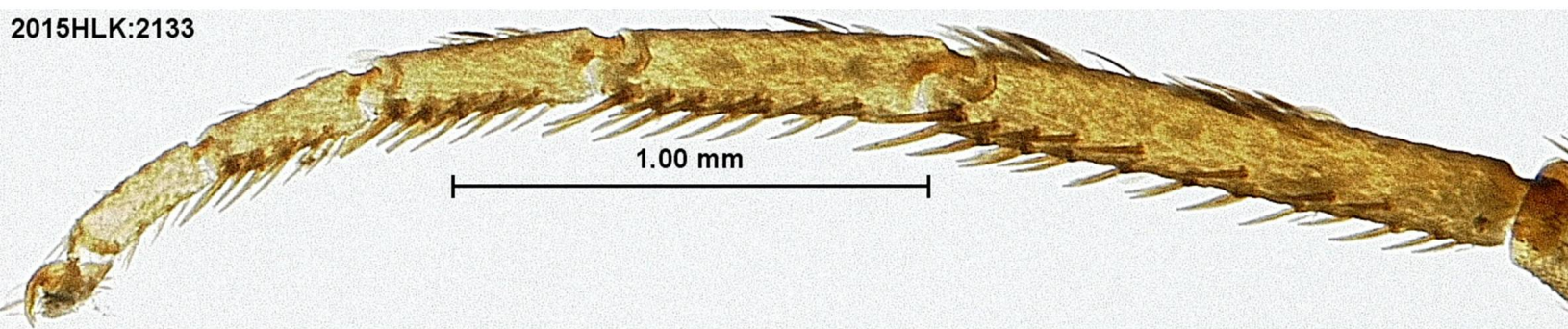
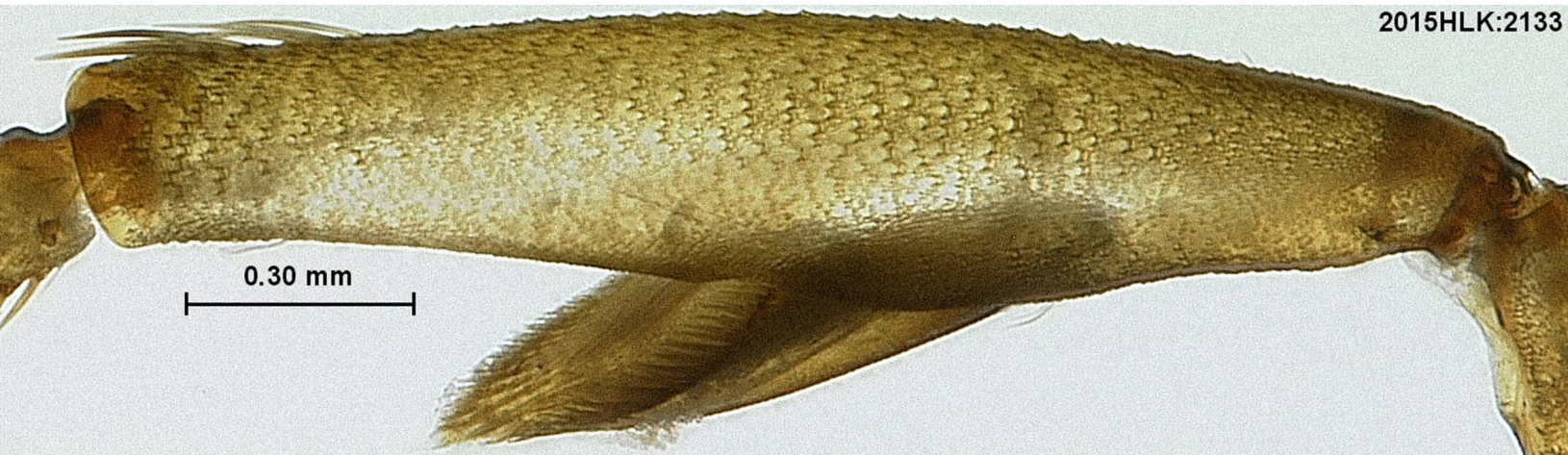
2015HLK:2133

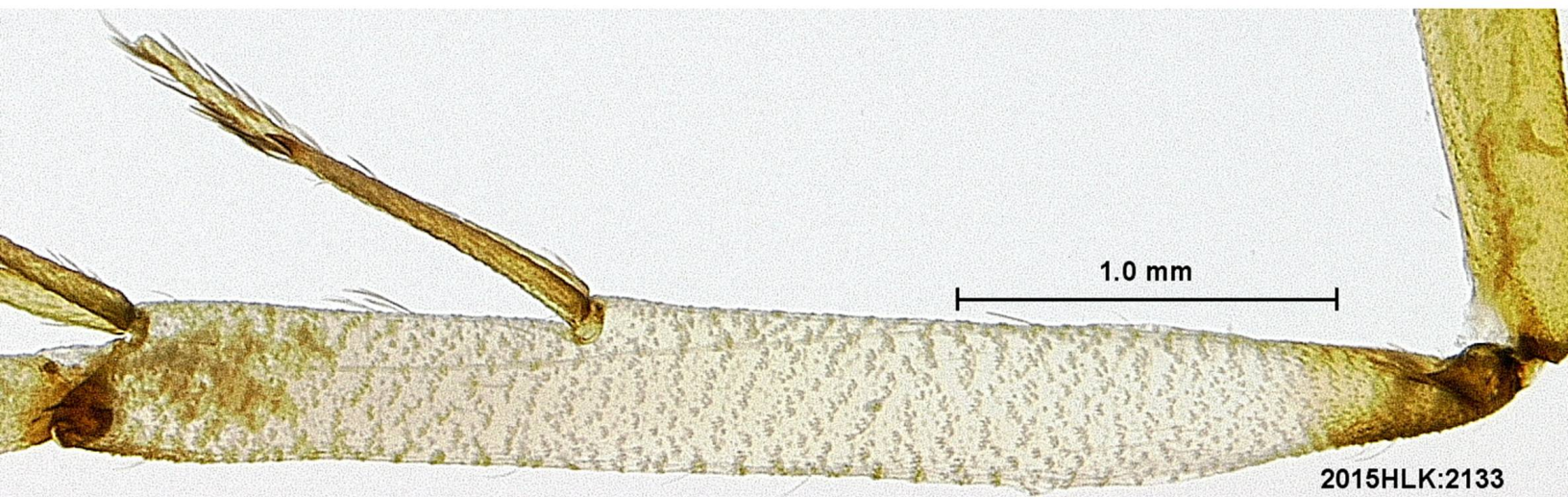
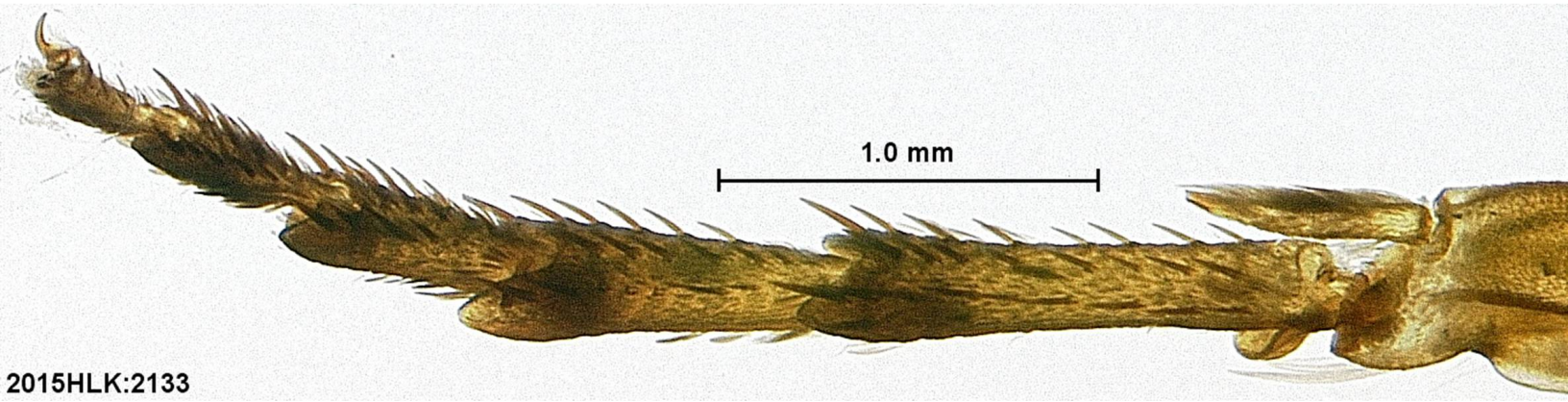
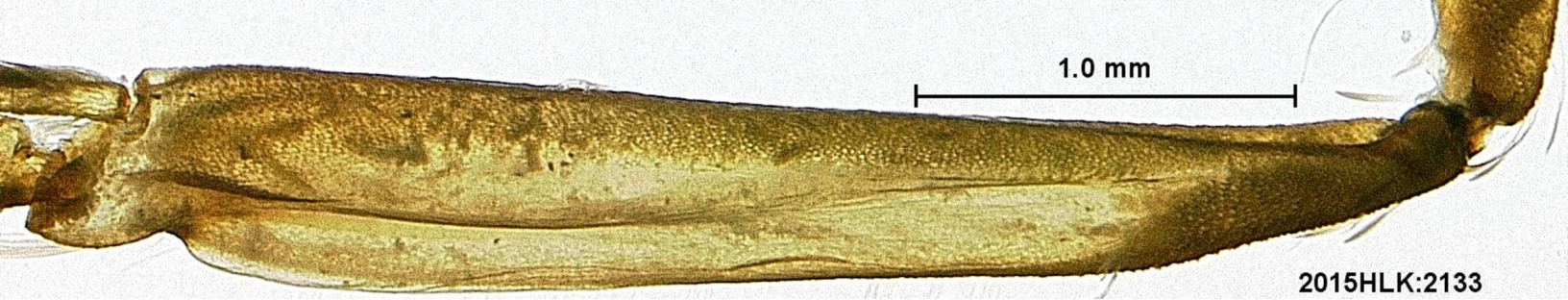


Tergite 8

2015HLK:2133

0.30 mm

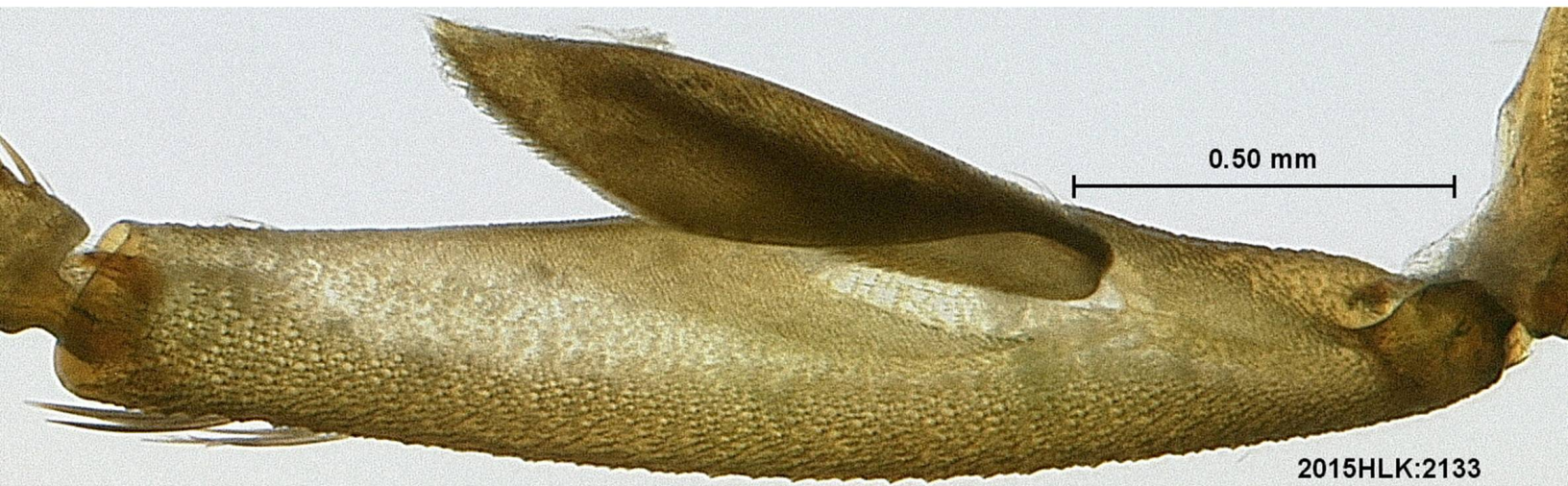






2015HLK:2133

Legs inner



2015HLK:2133

