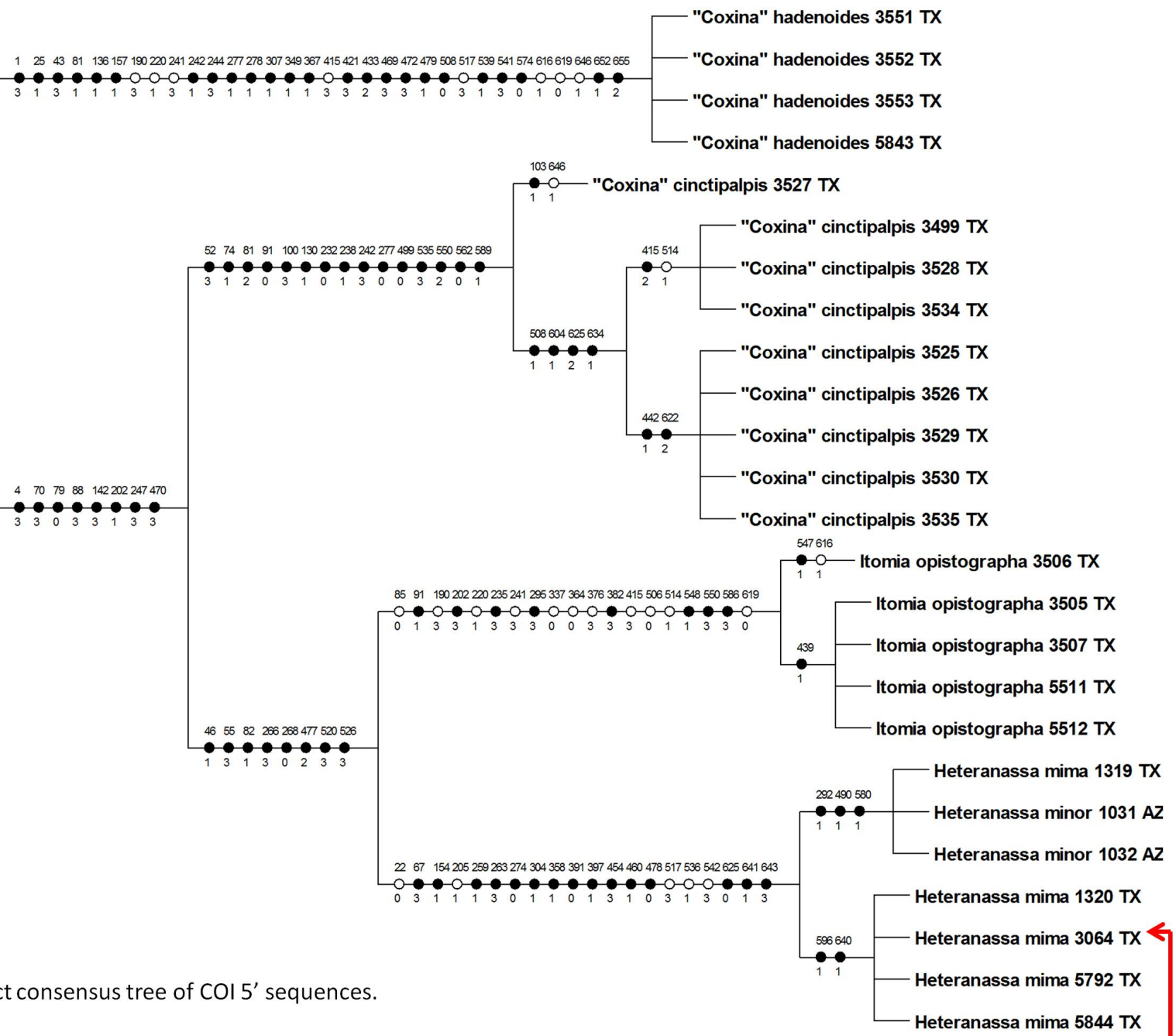


Dissection No.: 2013HLK:1906

Genitalia images were taken by Hugo Kons Jr. with the GT Vision imaging system at the American Entomological Institute. All structures are the natural three dimensional shape (not slide mounted) except for the abdominal cuticle (slide mounted).

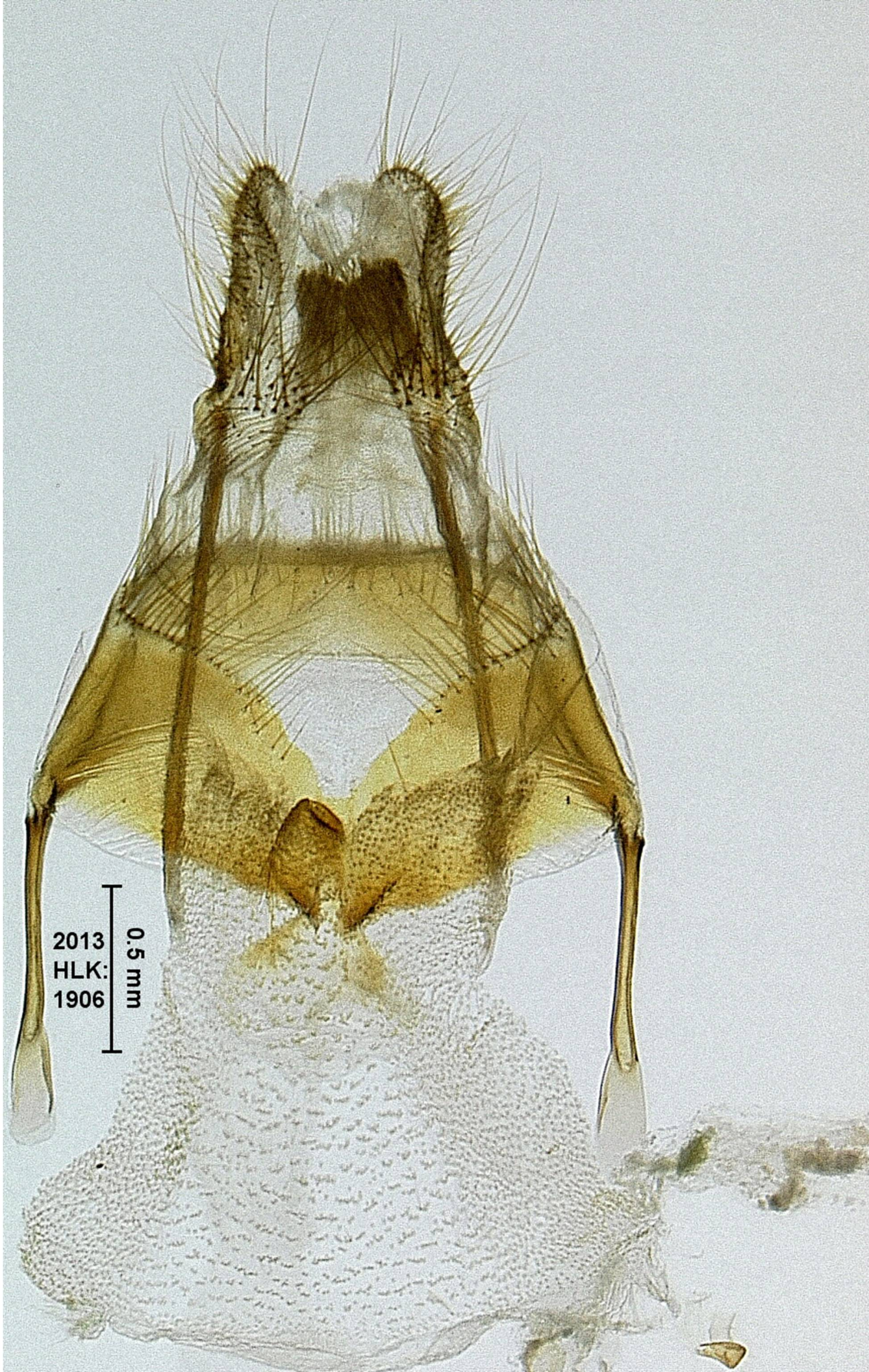
**Calyptra thalictri 9143 MA**



2013HLK:1906

Strict consensus tree of COI 5' sequences.

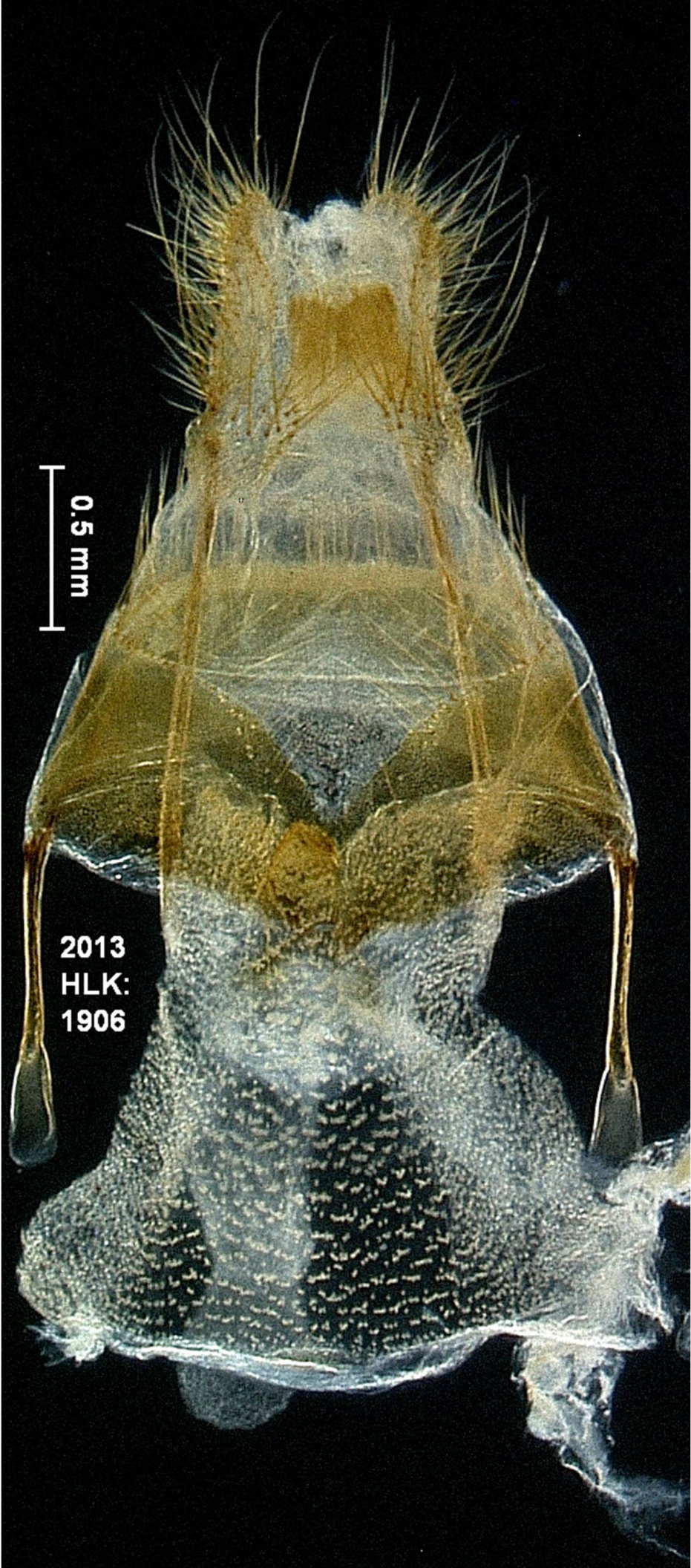
Ventral



2013  
HLK:  
1906

0.5 mm

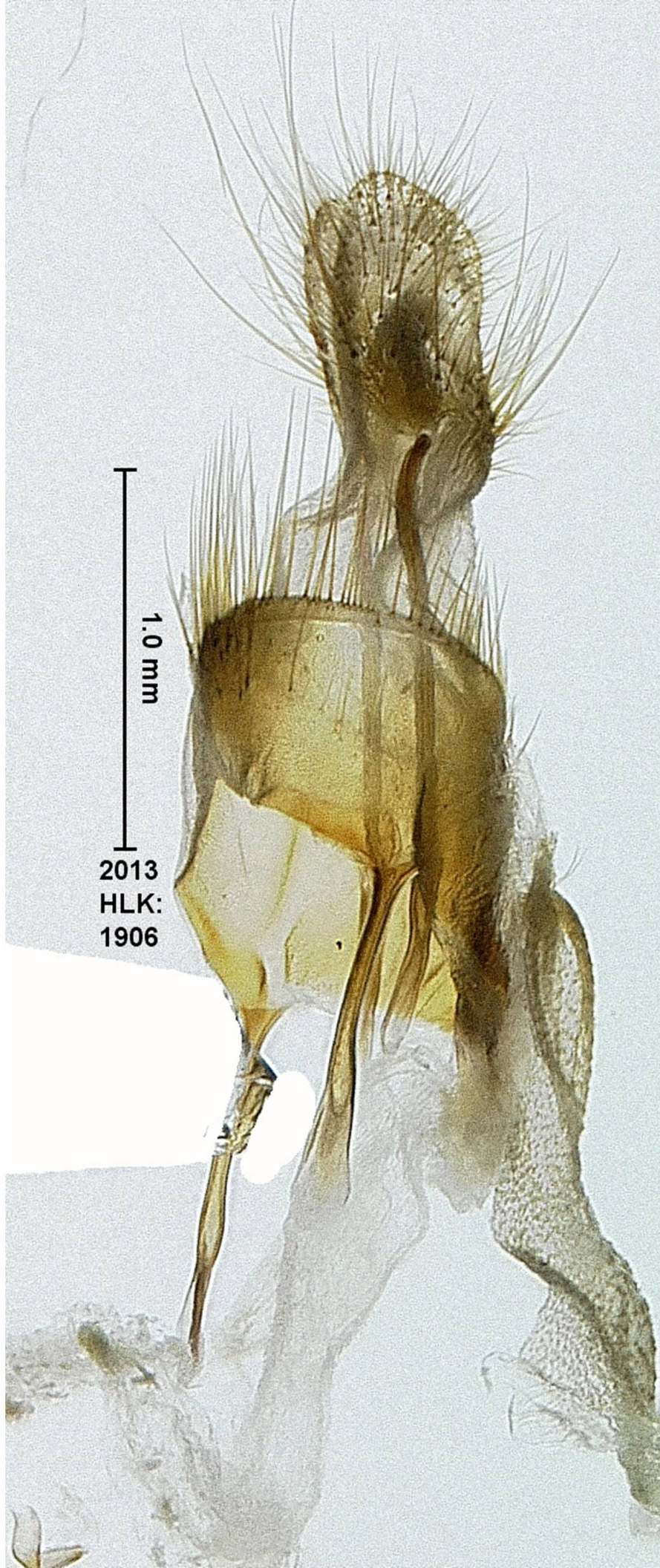
Ventral



0.5 mm

2013  
HLK:  
1906

Lateral



1.0 mm

2013  
HLK:  
1906

Lateral



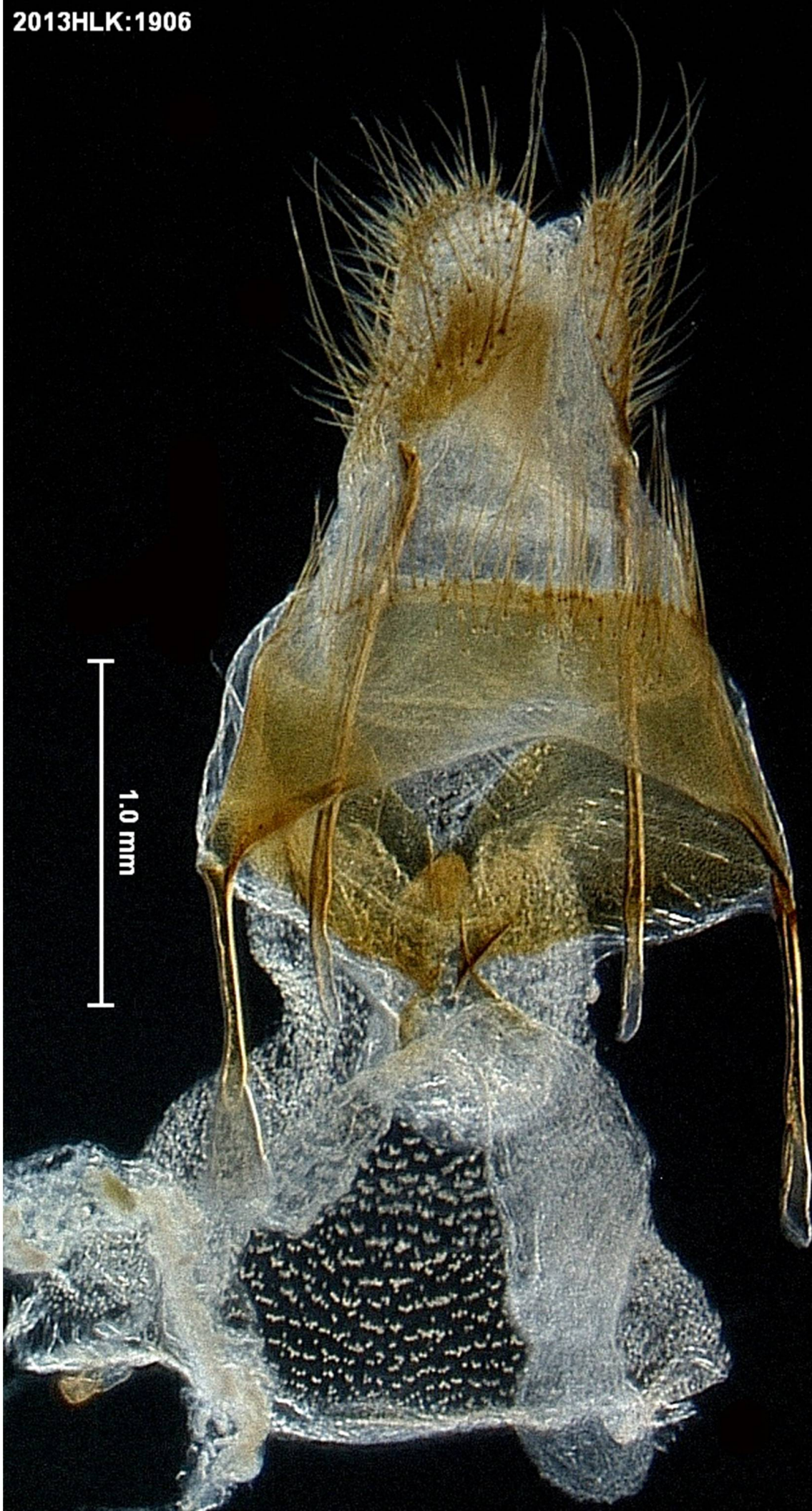
0.5 mm

2013  
HLK:  
1906

Dorsal

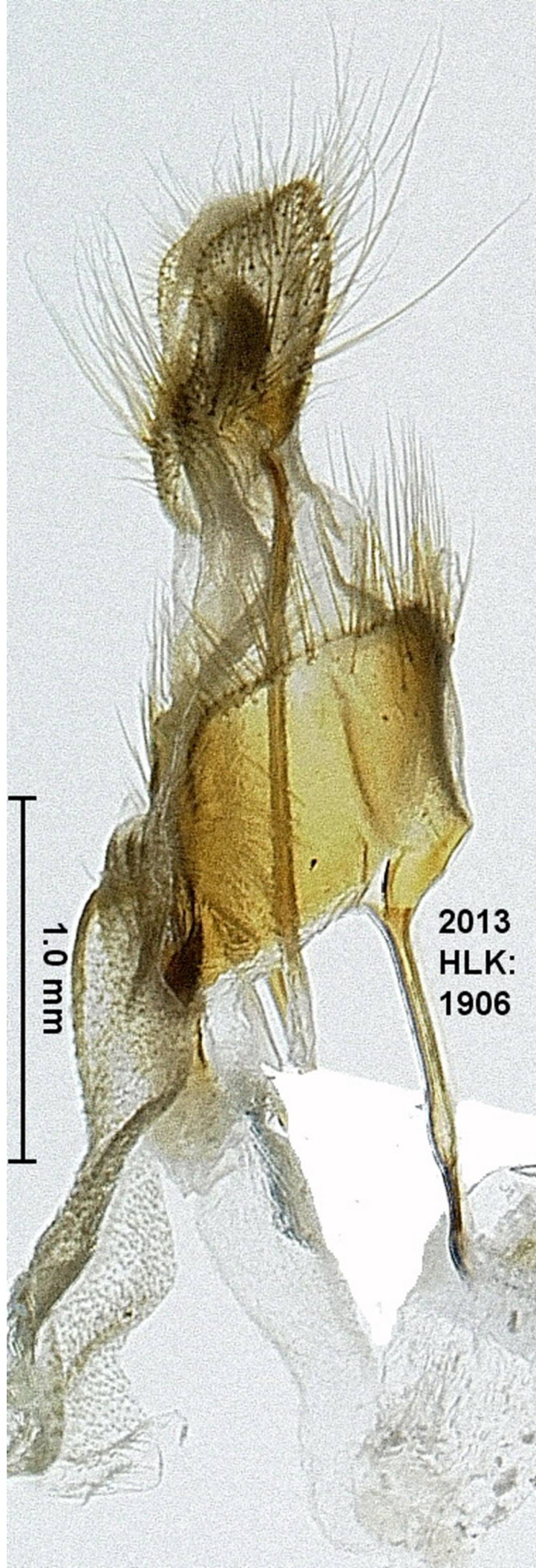
2013HLK:1906







Lateral



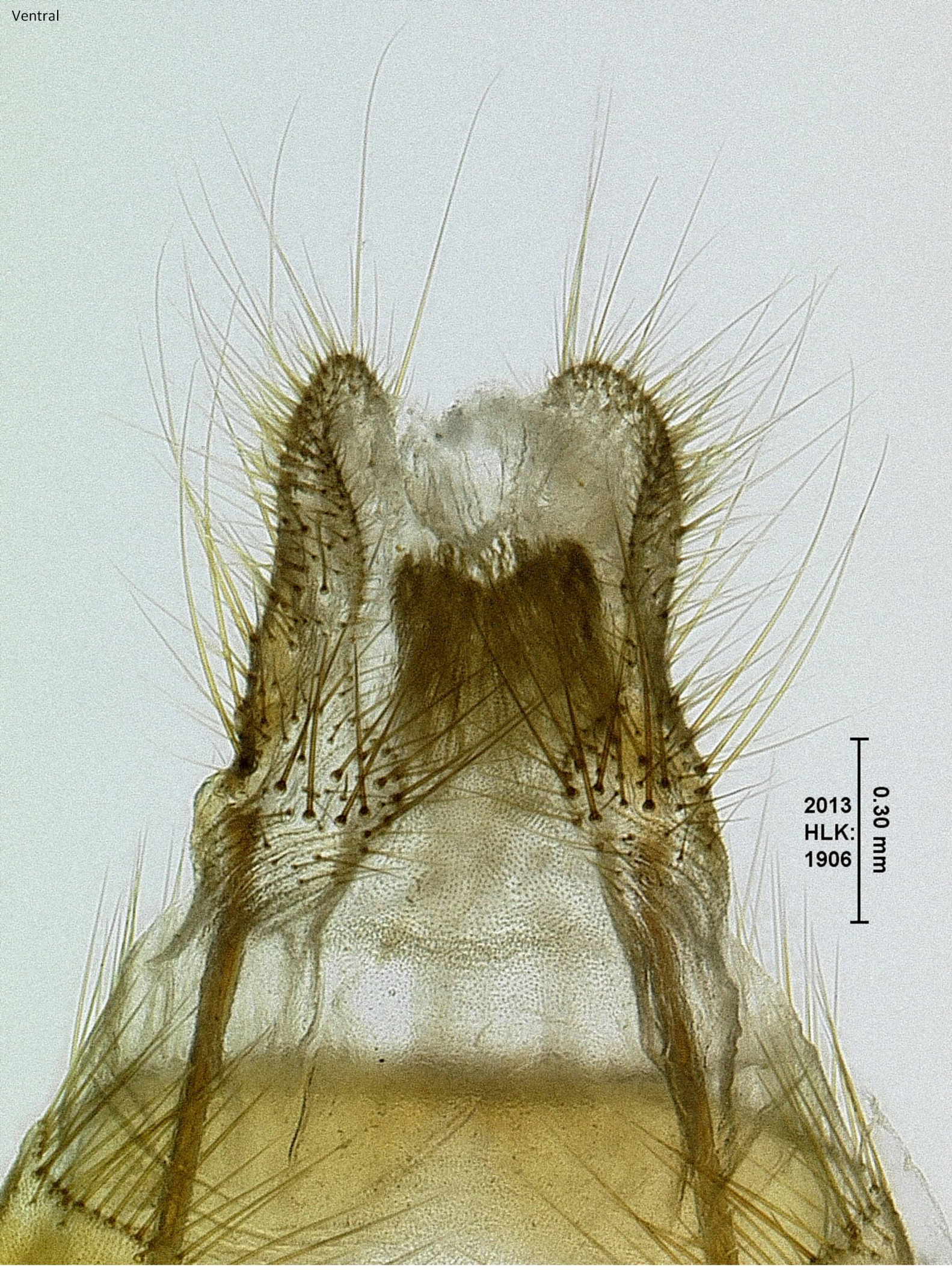
1.0 mm

2013  
HLK:  
1906

Lateral



Ventral



2013  
HLK:  
1906

0.30 mm

Ventral



0.50 mm

2013  
HLK:  
1906

Lateral

2013  
HLK:  
1906

0.50 mm



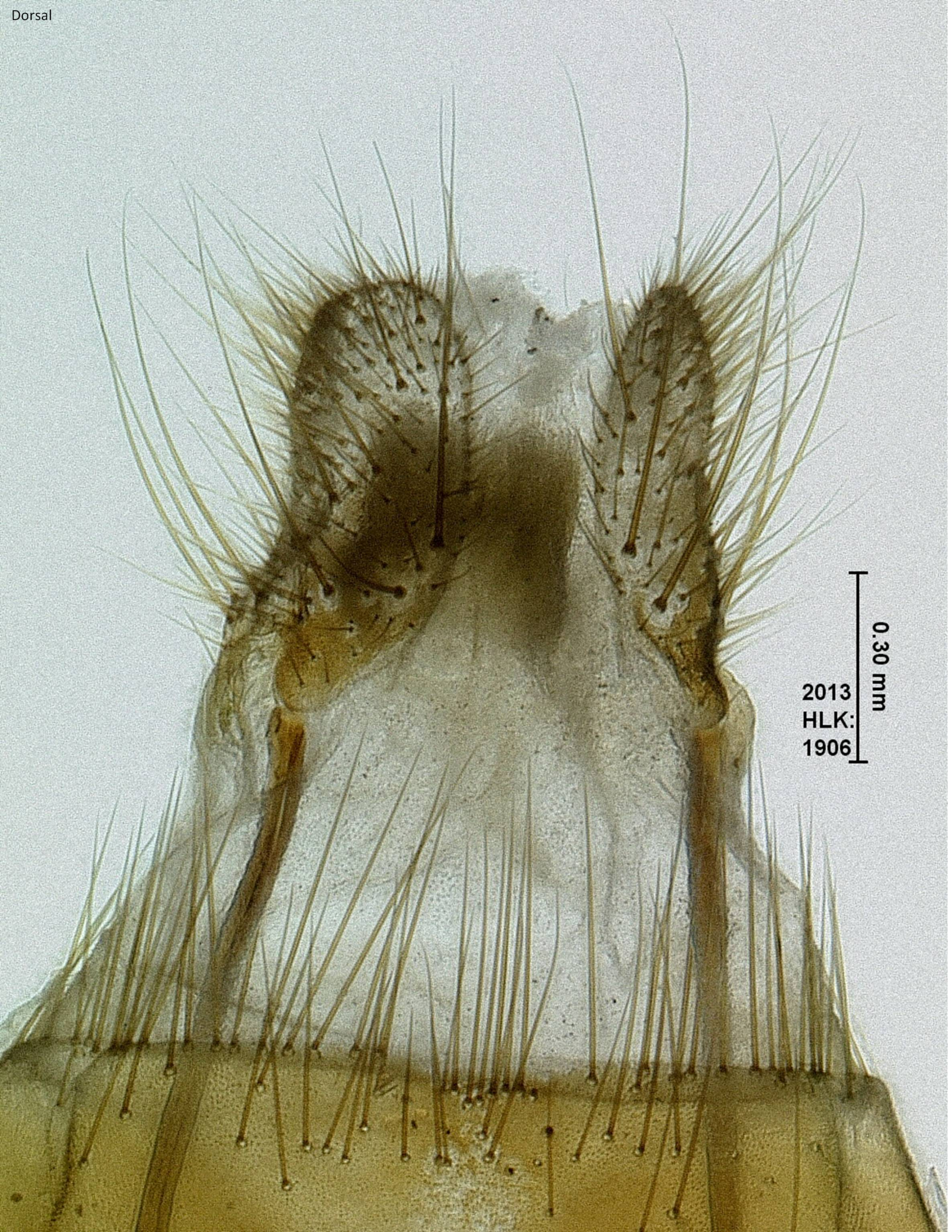
Lateral



2013  
HLK:  
1906

0.20 mm

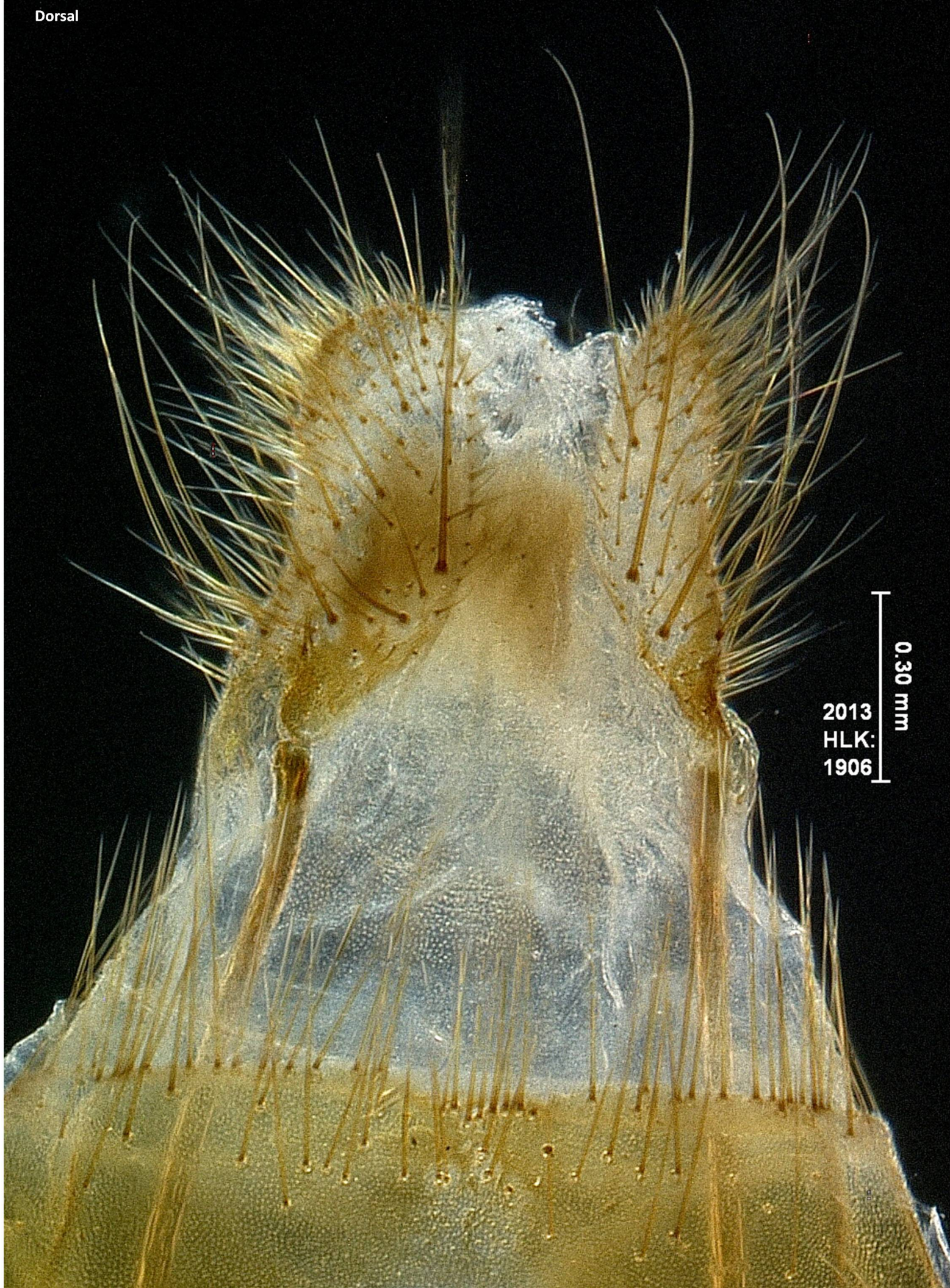
Dorsal



2013  
HLK:  
1906

0.30 mm

Dorsal



2013  
HLK:  
1906

0.30 mm





2013  
HLK:  
1906

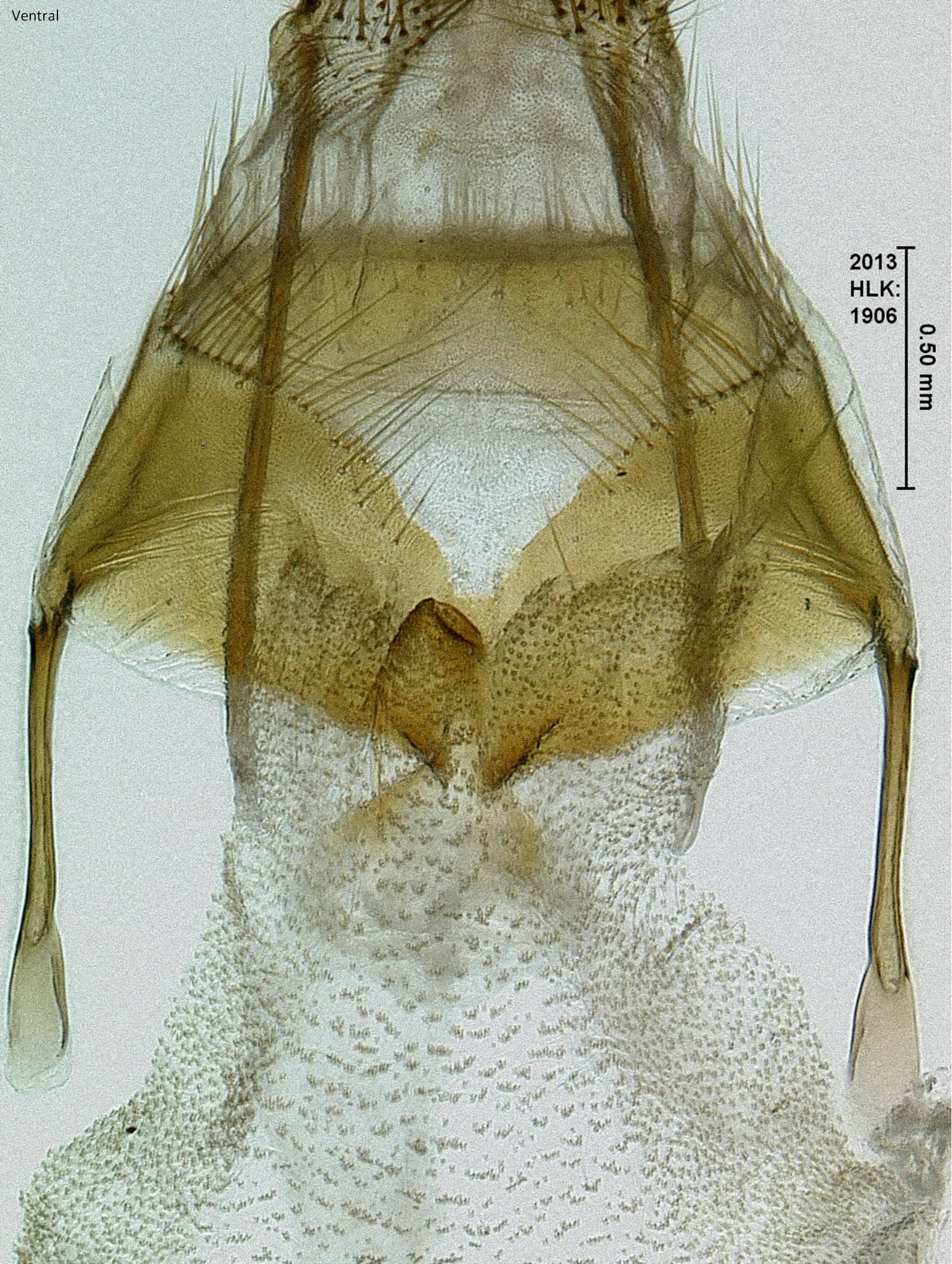
0.20 mm



2013  
HLK:  
1906

0.50 mm

Ventral



2013  
HLK:  
1906

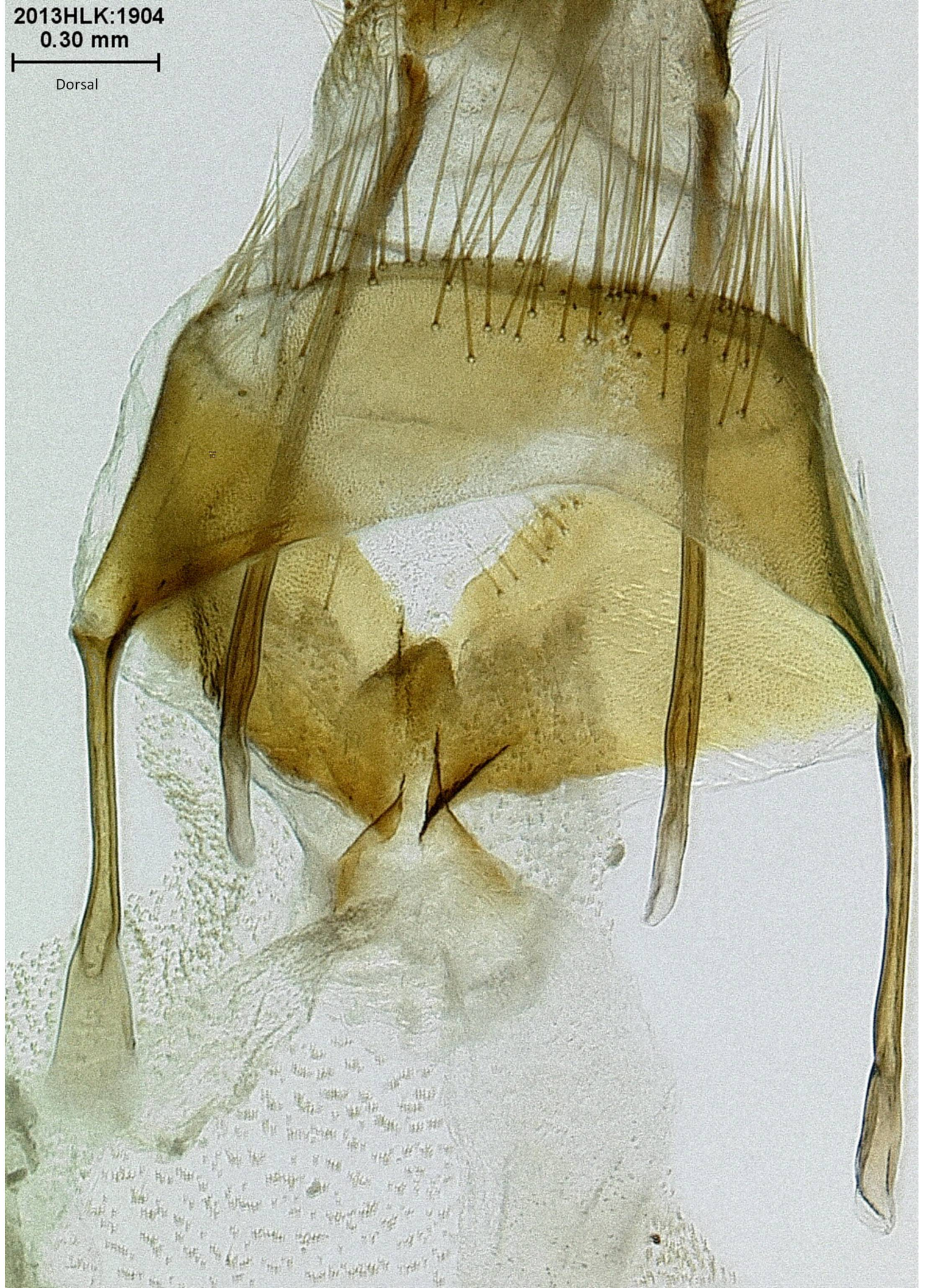
0.50 mm

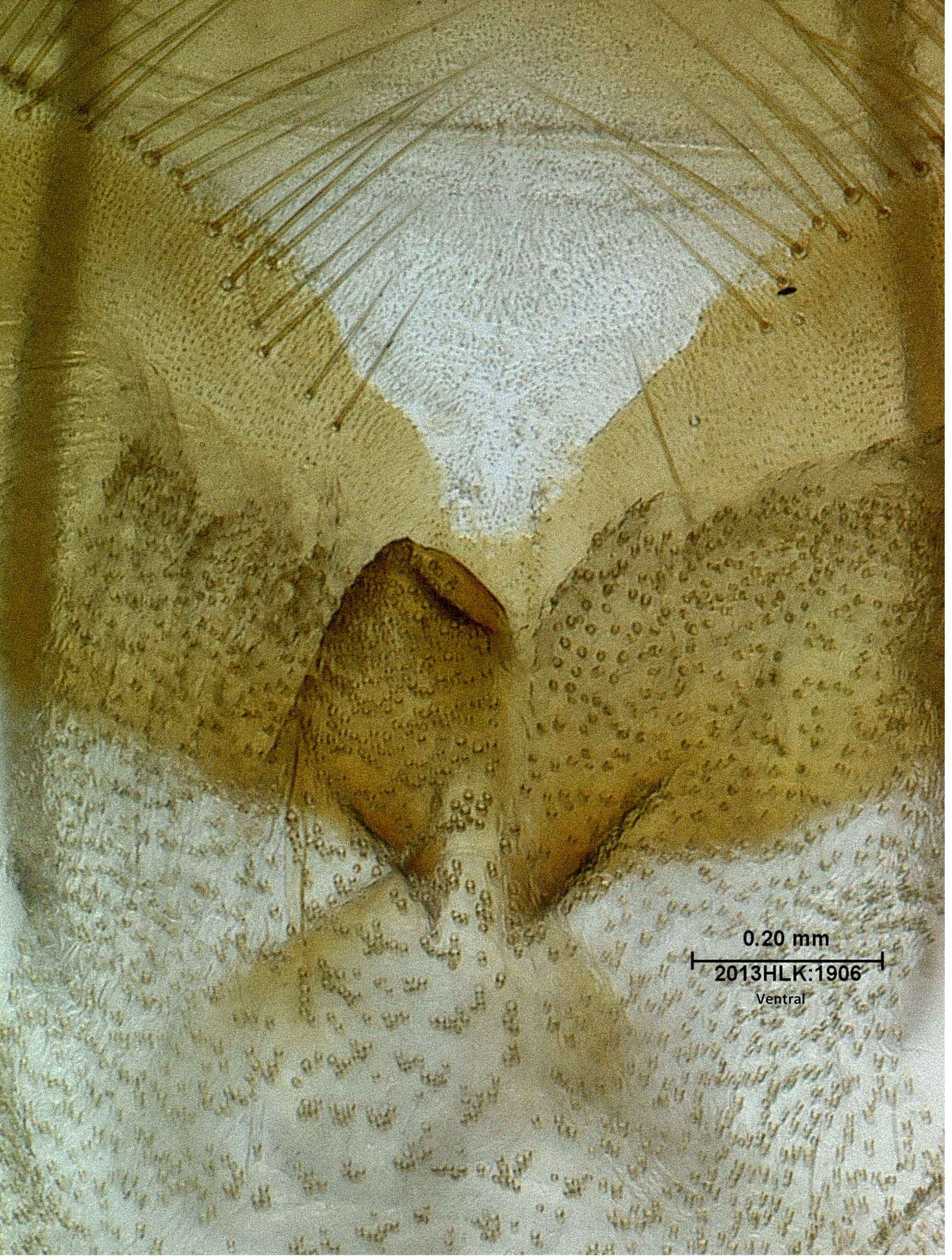
2013HLK:1904

0.30 mm



Dorsal





0.20 mm

2013HLK:1906

Ventral



0.10 mm

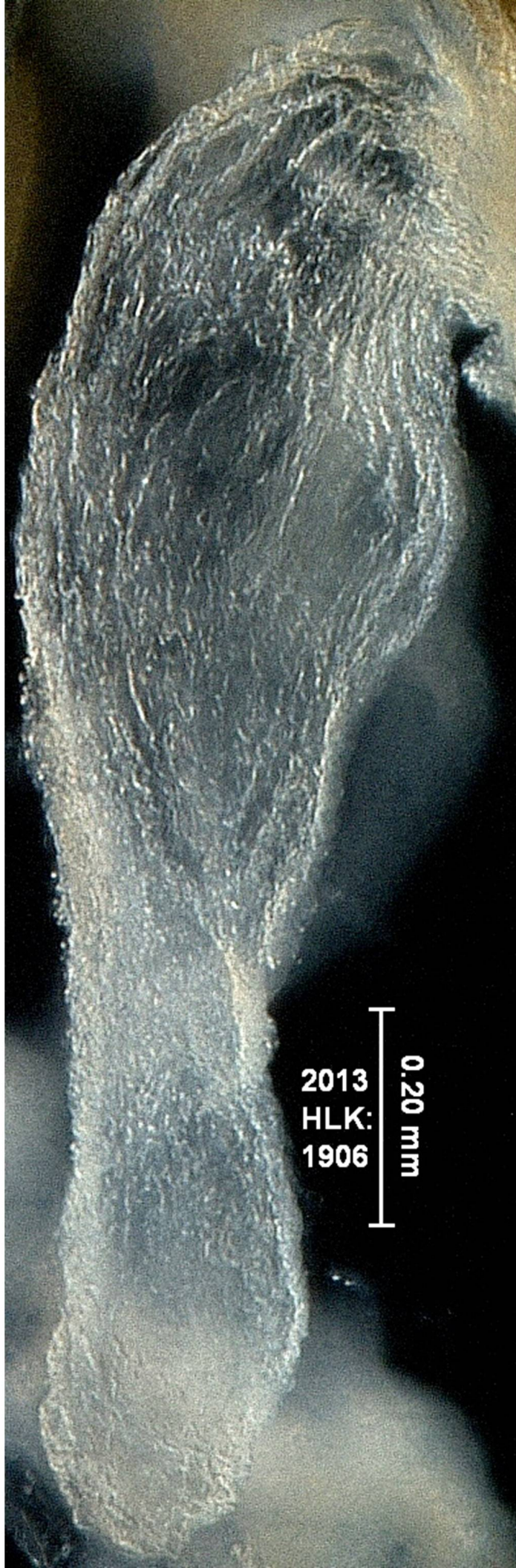
2013  
HLK:  
1906  
Dorsal

Dorsal



2013  
HLK:  
1906  
0.10 mm

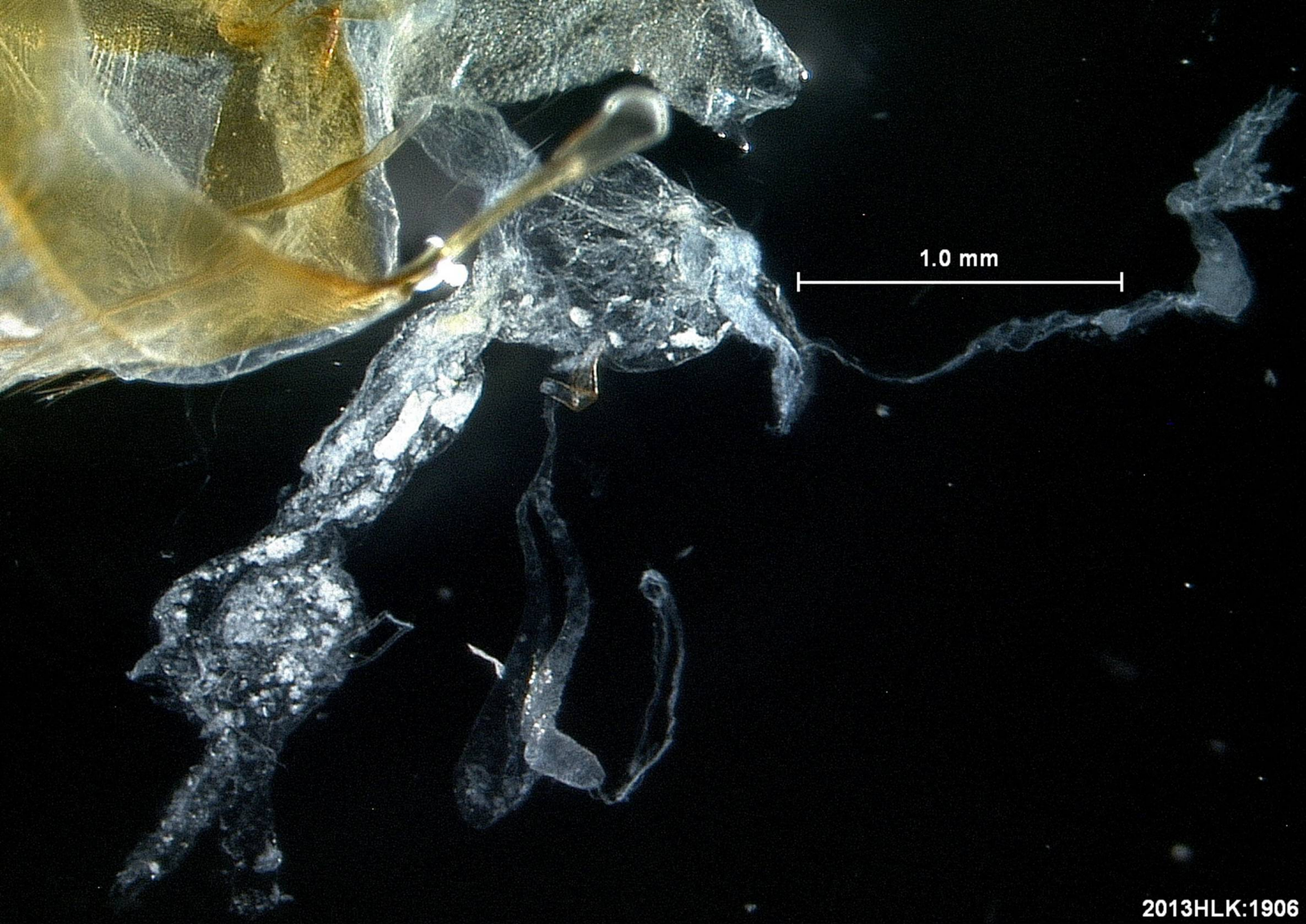
Lateral



2013  
HLK:  
1906

0.20 mm





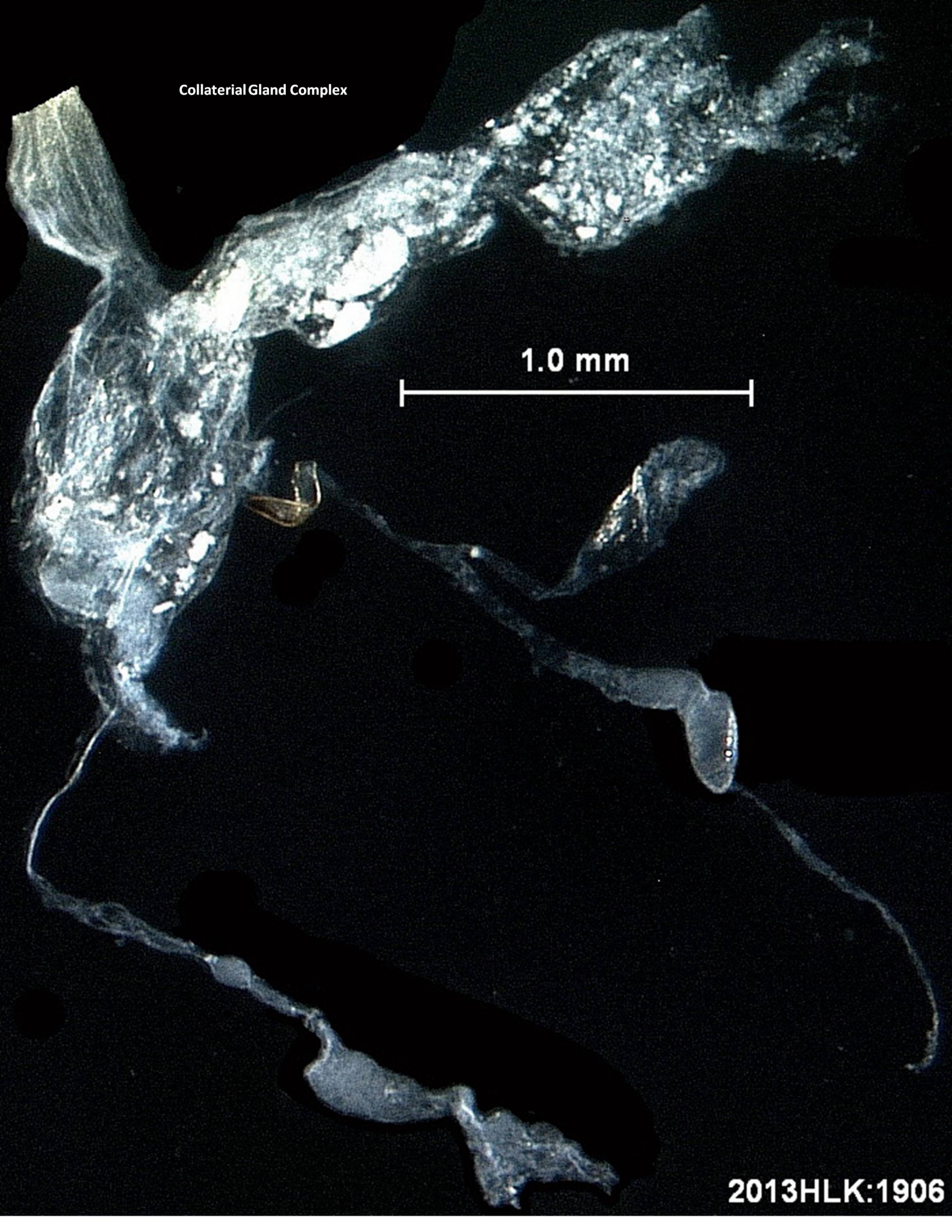
2013HLK:1906

Female genitalia with ductus seminalis, vagina, and collateral gland complex

Collateral Gland Complex

1.0 mm

2013HLK:1906





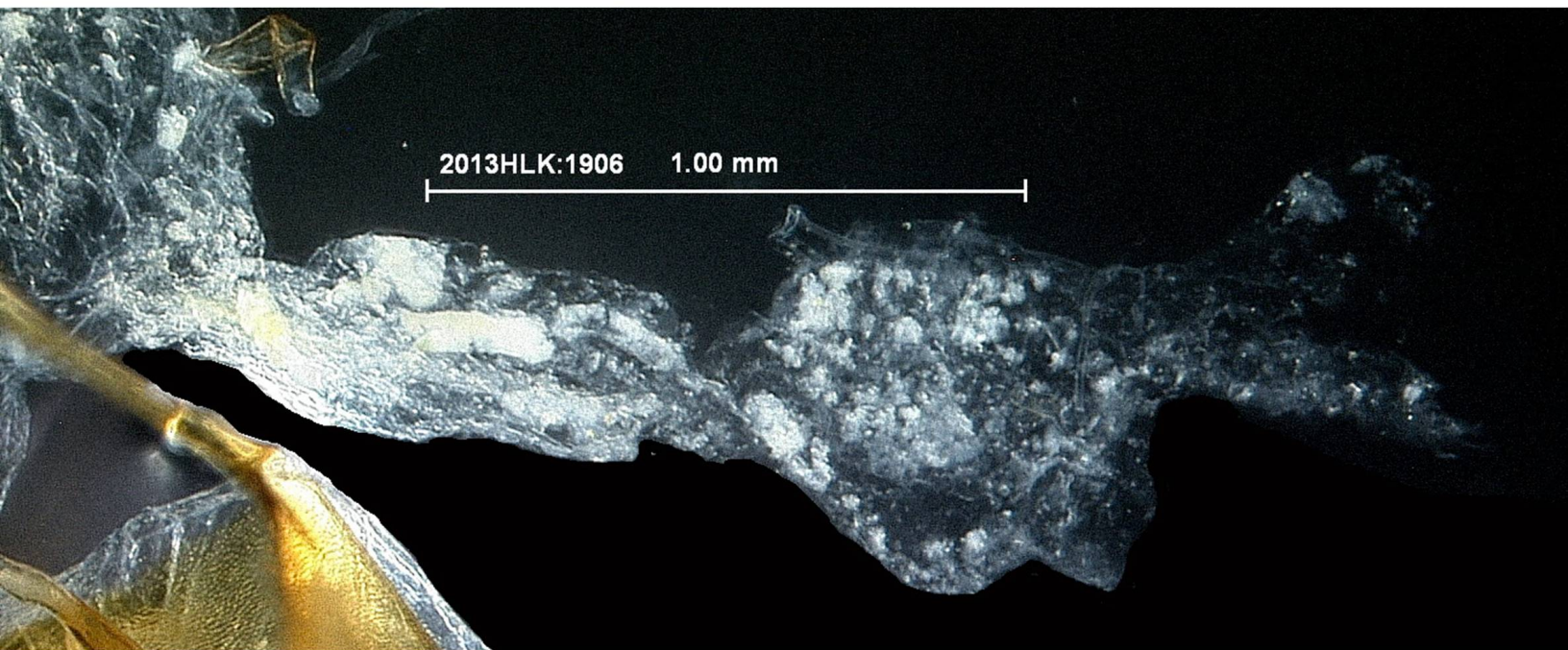
0.30 mm

2013HLK:1906

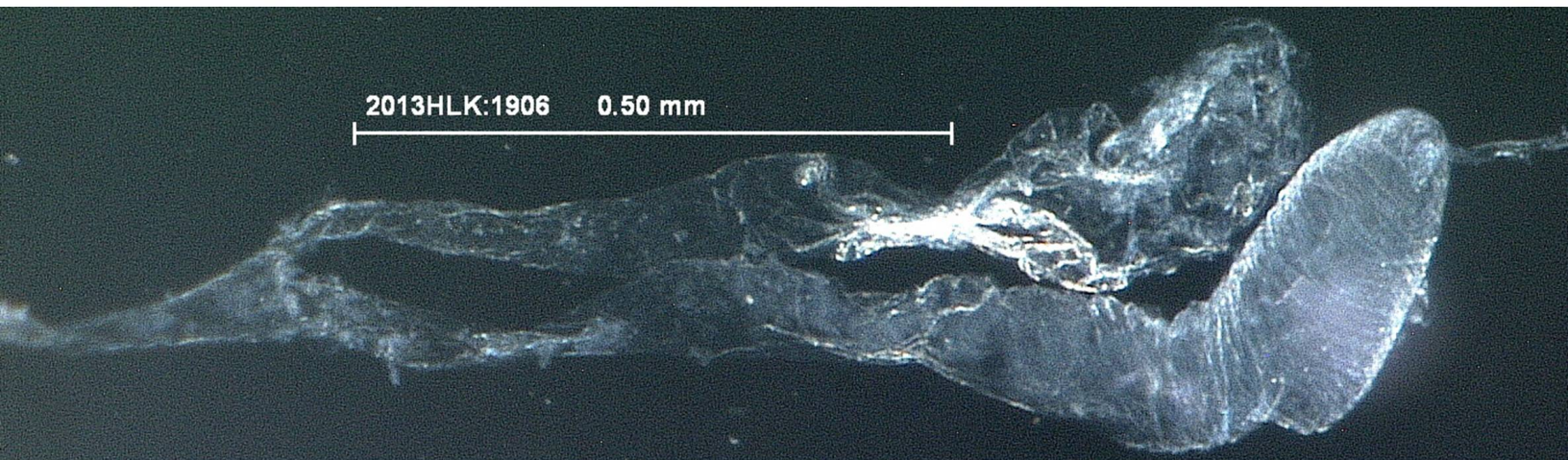
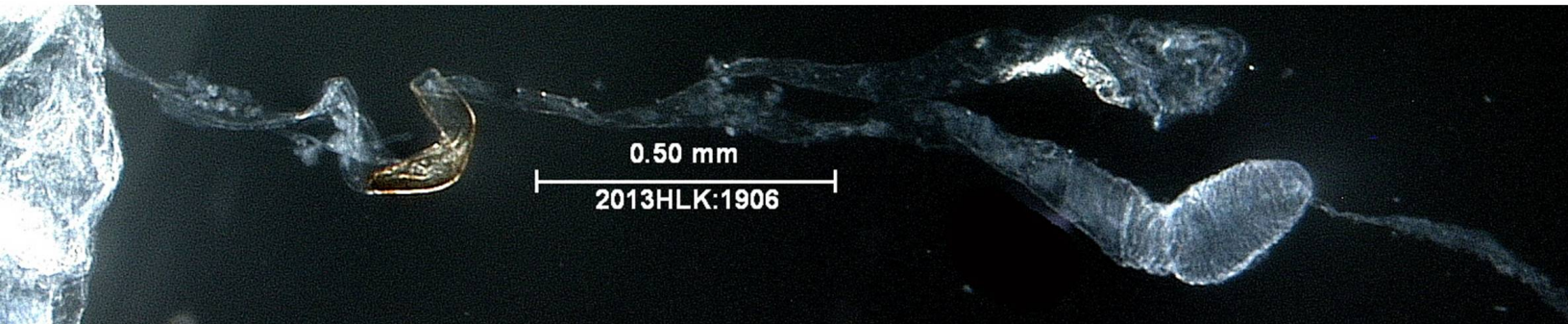
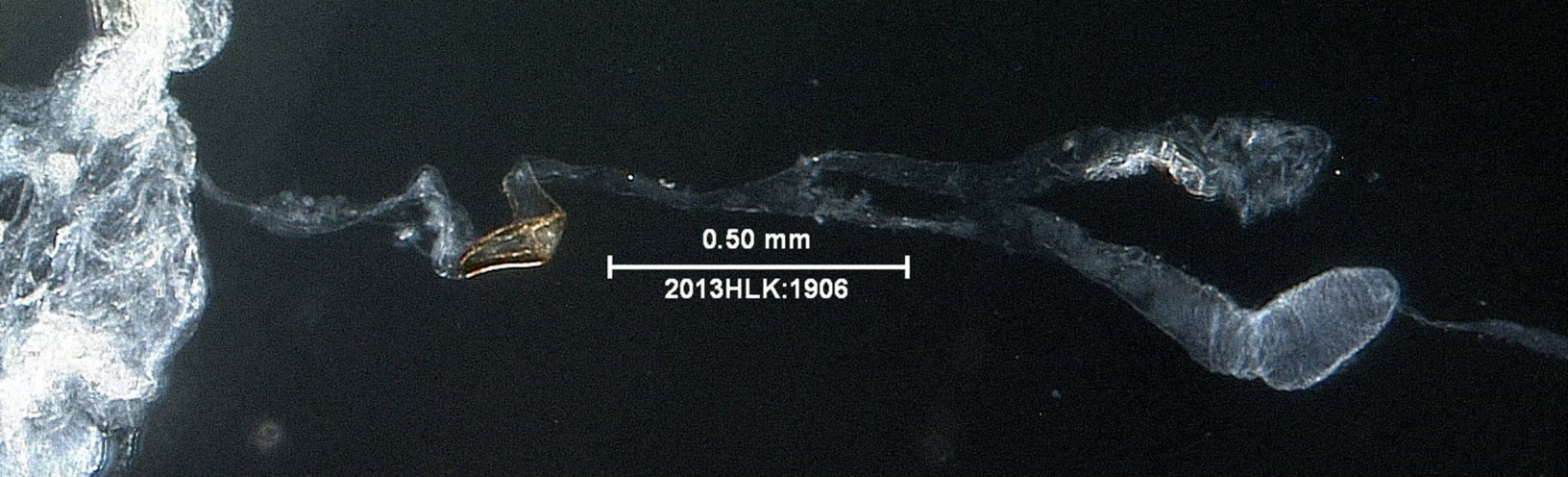
Ductus Seminalis and Corpus Bursae



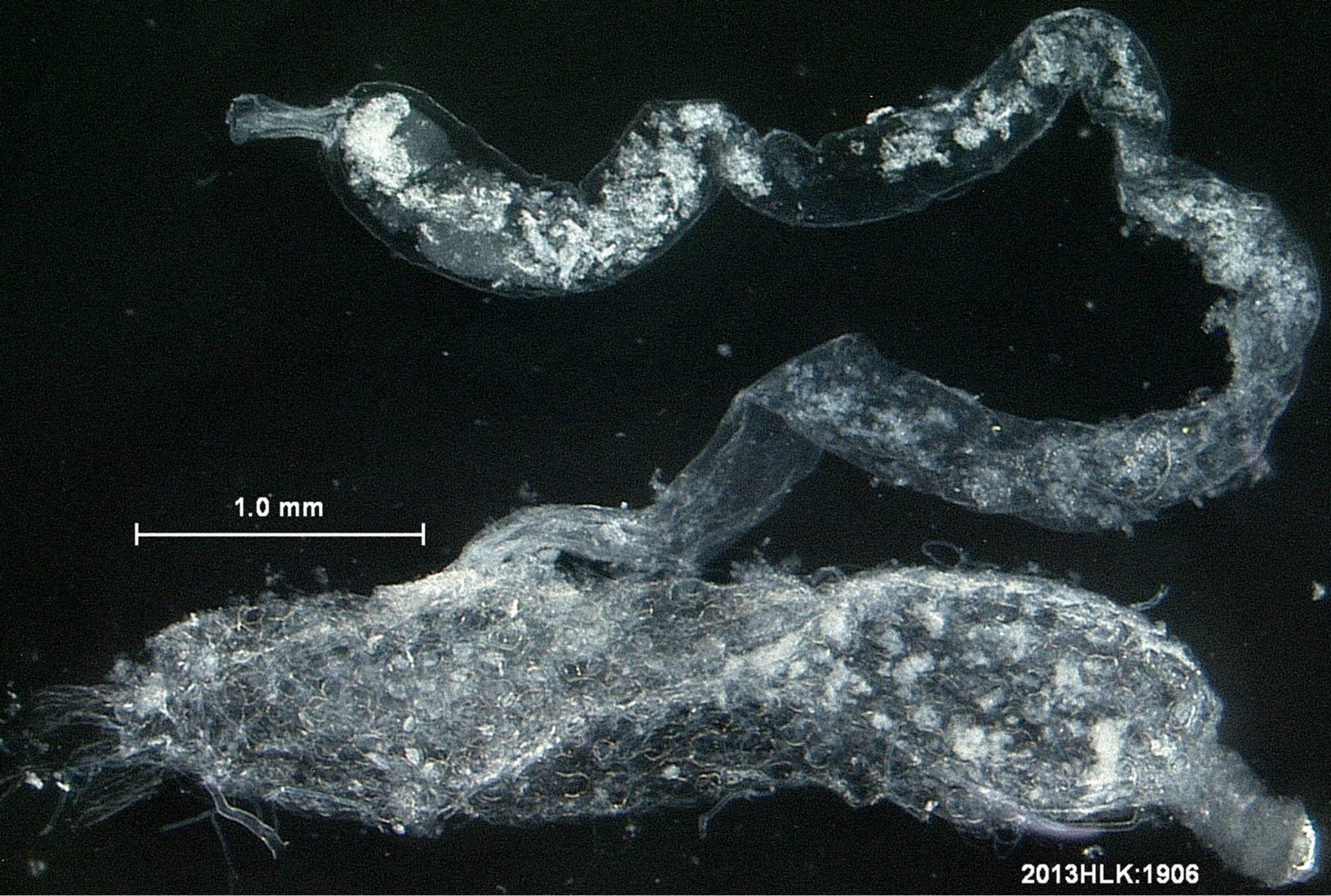
Collateral Gland (paired stalked terminal glands not recovered)



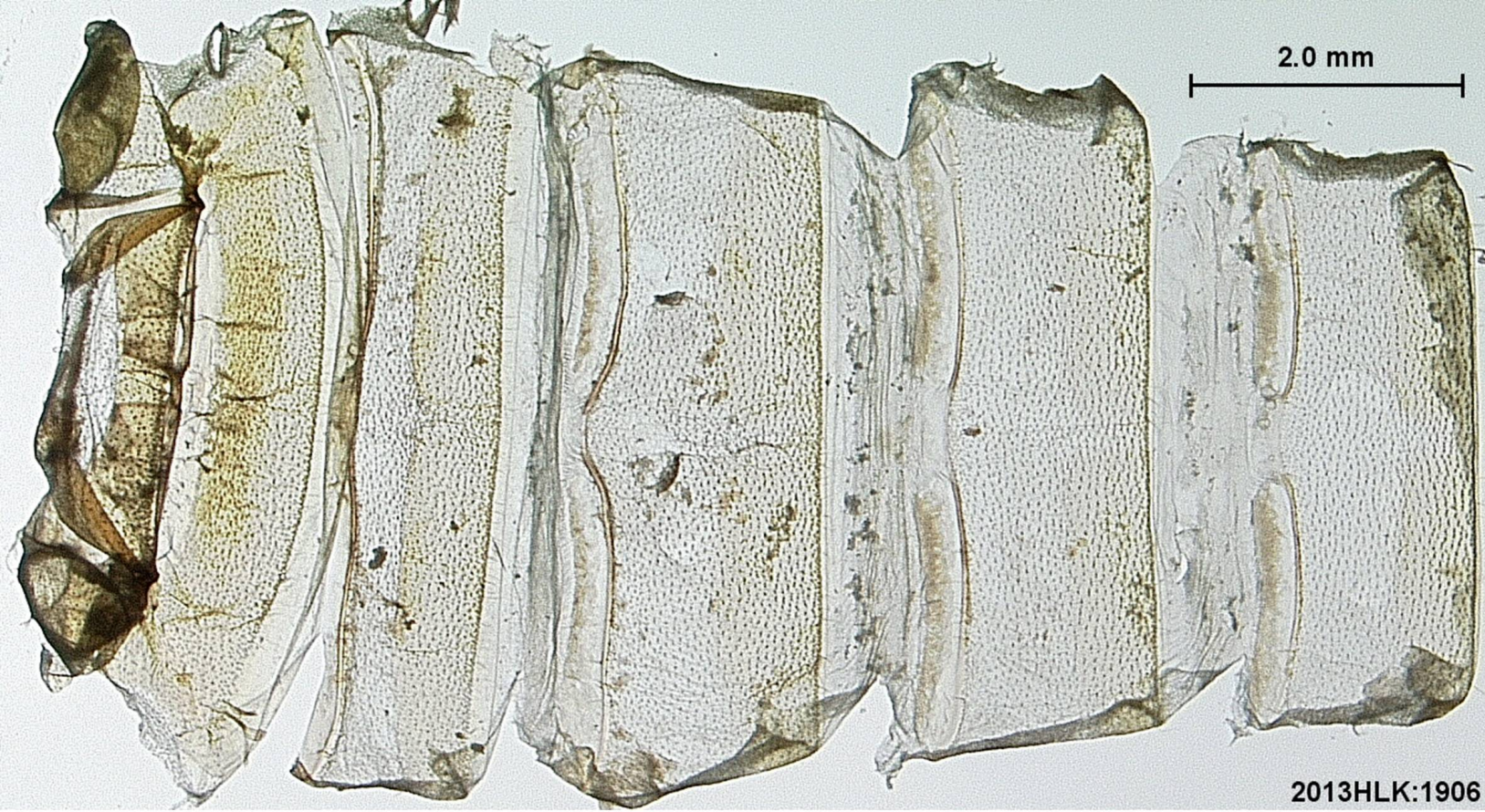
Oviductus Communalis



Receptacle Duct and Glands

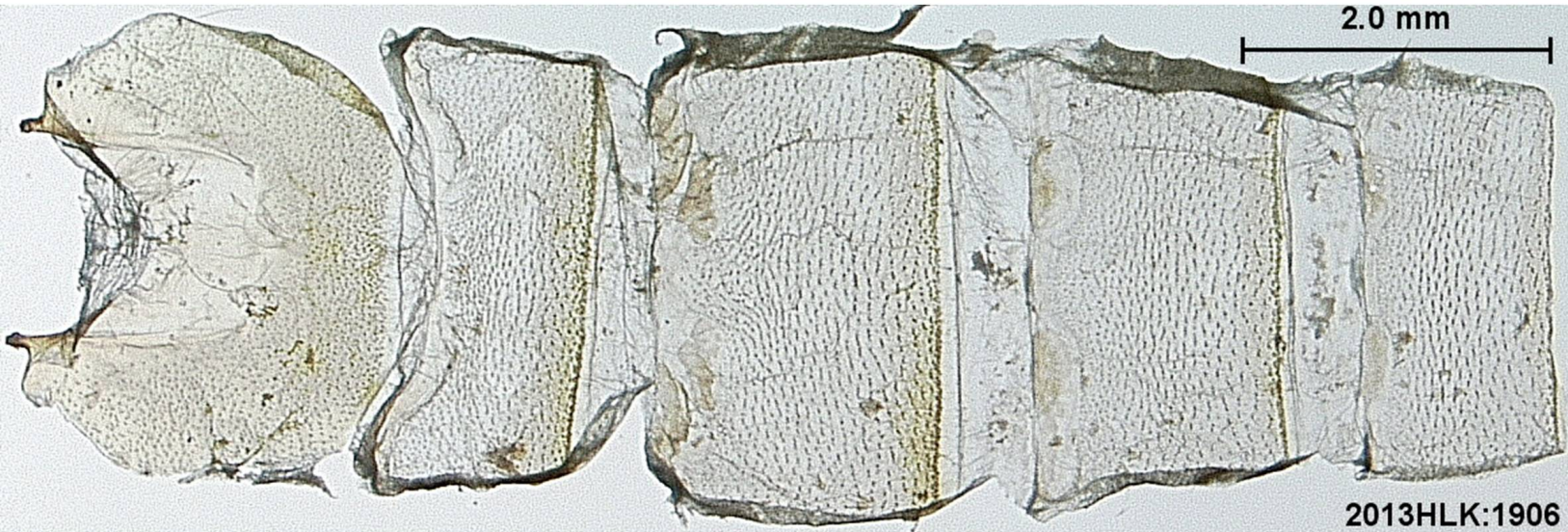


Rectum and Intestine



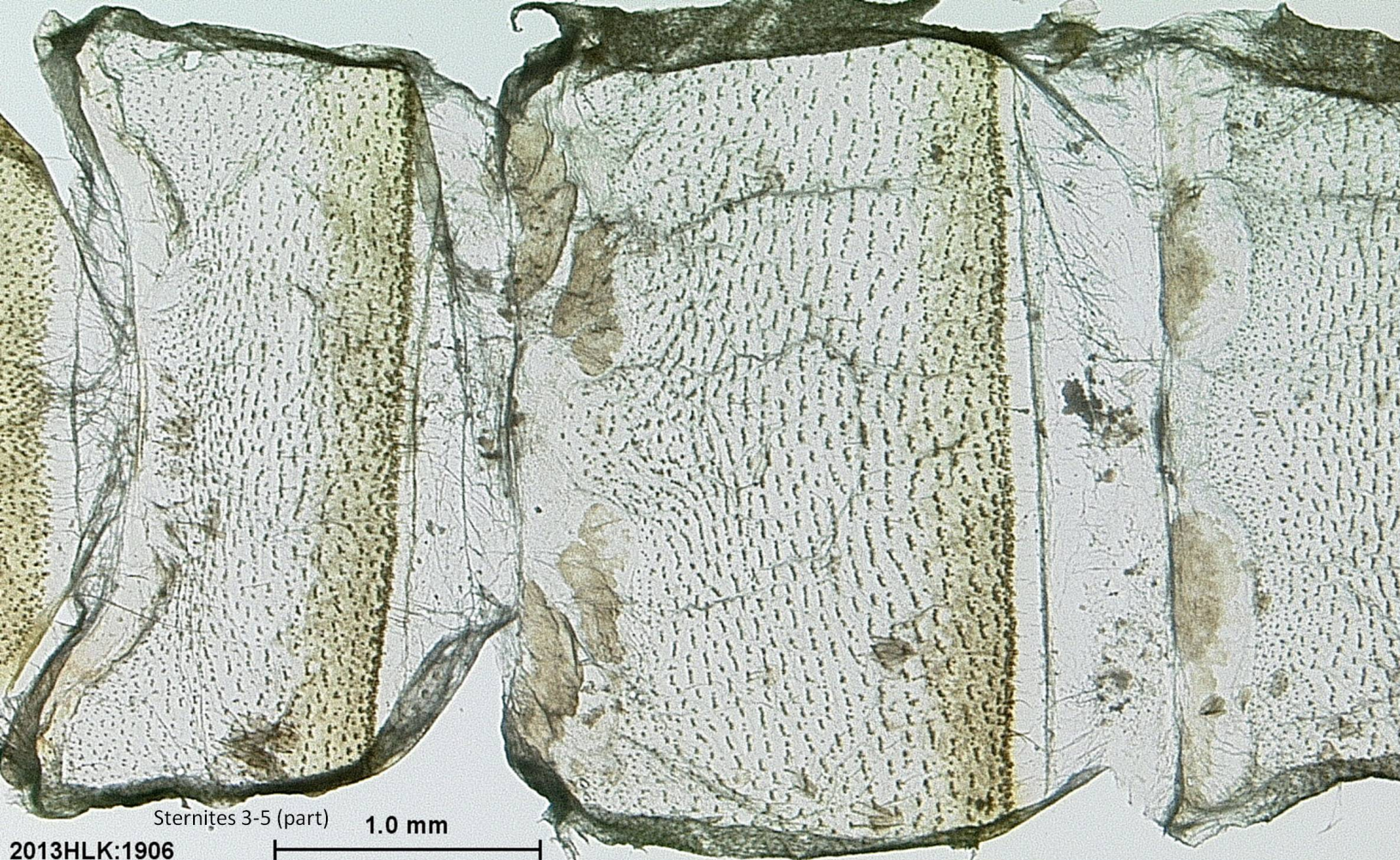
2013HLK:1906

Tergites 1-6



2013HLK:1906

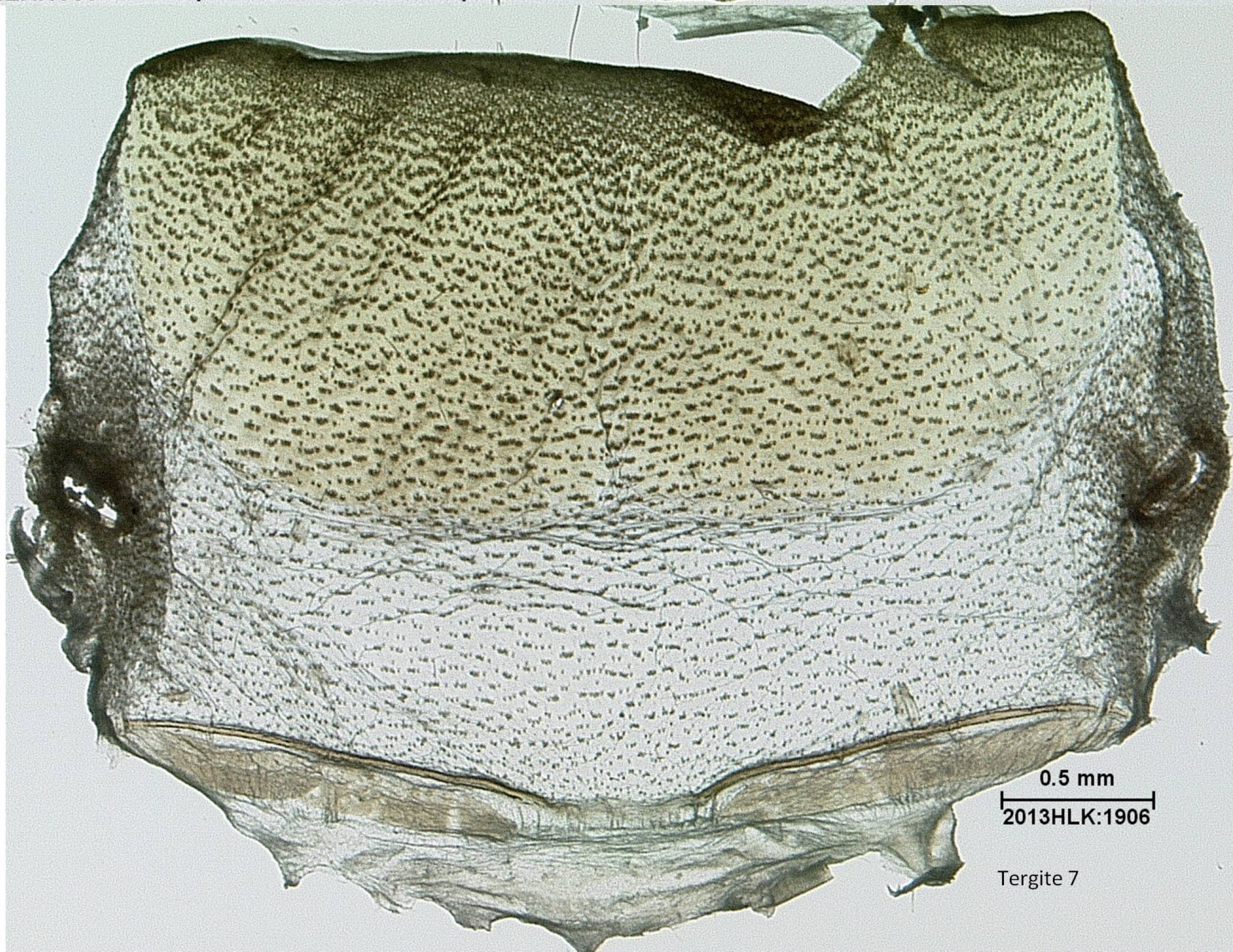
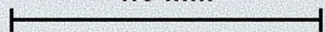
Sternites 2-6



Sternites 3-5 (part)

1.0 mm

2013HLK:1906



0.5 mm

2013HLK:1906

Tergite 7